

## \$2,595 - 387 Galbraith Close, Edmonton

MLS® #E4449255

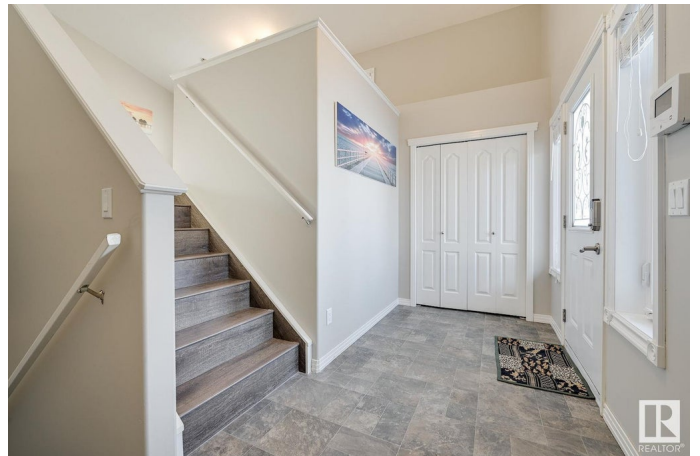
**\$2,595**

3 Bedroom, 2.00 Bathroom, 1,141 sqft

Rental on 0.00 Acres

Glastonbury, Edmonton, AB

Located in Glastonbury, this spacious 1141 sq ft bi-level with a fully finished basement offers over 2,100 sq ft of total living space, perfect for multi-generational living or extra rental flexibility. Featuring 3 bedrooms + den, 2 full kitchens, 2 full baths, and 2 attached garages, this home is packed with value. The main floor boasts vaulted ceilings, upgraded laminate flooring, large picture windows, and an open-concept layout with a cozy fireplace. The kitchen features stainless steel appliances, pantry, tile backsplash, and access to a fully fenced yard with two-tiered deck and mature landscaping. Two large bedrooms, a full bath, and stacked laundry complete the main level. Downstairs, with private access from the garage or main floor, you'll find a second kitchen, living area, full bath, bedroom, den with sliding doors, another washer/dryer, and tons of storage. Steps to schools, trails, and minutes from WEM, Whitemud, and Henday—this home truly has it all.



Built in 2002

### Essential Information

MLS® #	E4449255
Price	\$2,595
Bedrooms	3
Bathrooms	2.00

Full Baths	2
Square Footage	1,141
Acres	0.00
Year Built	2002
Type	Rental
Style	Bi-Level
Status	Active

### Community Information

Address	387 Galbraith Close
Area	Edmonton
Subdivision	Glastonbury
City	Edmonton
County	ALBERTA
Province	AB
Postal Code	T5T 6K3

### Amenities

Parking	Double Garage Attached
---------	------------------------

### Interior

Appliances	Dryer-Two, Garage Control, Garage Opener, Refrigerators-Two, Stoves-Two, Washers-Two, Window Coverings, Dishwasher-Two
------------	--

### Additional Information

Date Listed	July 23rd, 2025
Days on Market	6
Zoning	Zone 58

DATA IS DEEMED RELIABLE BUT IS NOT GUARANTEED ACCURATE BY THE REALTORS® ASSOCIATION OF EDMONTON. COPYRIGHT 2025 BY THE REALTORS® ASSOCIATION OF EDMONTON. ALL RIGHTS RESERVED. Trademarks are owned or controlled by the Canadian Real Estate Association (CREA) and identify real estate professionals who are members of CREA (REALTOR®, REALTORS®) and/or the quality of services they provide (MLS®, Multiple Listing Service®)

Listing information last updated on July 29th, 2025 at 6:32pm MDT