

\$664,900 - 3248 Pelerin Crescent, Beaumont

MLS® #E4449117

\$664,900

5 Bedroom, 3.00 Bathroom, 2,432 sqft

Single Family on 0.00 Acres

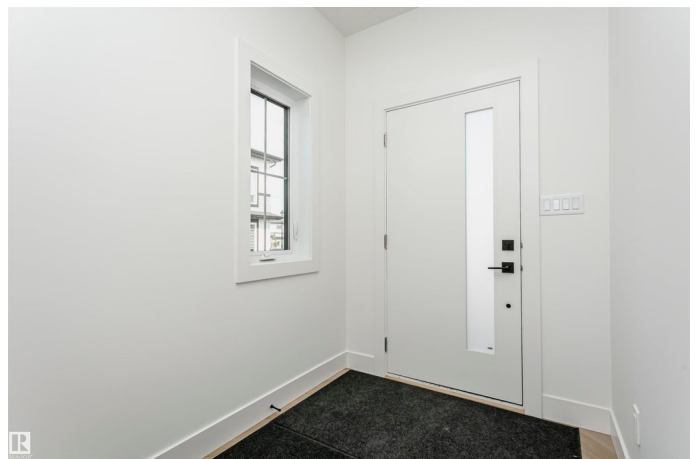
Place Chaleureuse, Beaumont, AB

PLACE CHALEUREUSE- BRAND NEW 2 Storey + Basement, 2432 sq ft, 4 Bedroom + BONUS room FUNCTIONAL LAYOUT-OVERSIZED DOUBLE GARAGE - UPGRADED KITCHEN, All SHELIVING is MDF, FLOORING is tile, Luxury Vinyl, or carpet, TRIPLE PANE WINDOWS are EVERYWHERE! DEN/BEDROOM at the front of home. ALL COUNTERS are QUARTZ & pantry has WALK-THROUGH MUD ROOM from garage with Boot Bench & Walk in Closet. Bonus room has tons of natural light. Spacious Master with your LUXURIOUS ensuite that has dbl vanity, Freestanding soaker tub & glass shower ! MASSIVE ensuite closet. The WELL sized 2nd,3rd and 4th bedroom, full bath, & LAUNDRY round off upper flr. Basement has SIDE ENTRANCE, OVERSIZED WINDOWS & utilities/rough-ins tucked away w TANKLESS WATER! Appliance package included. Deck and decent size backyard to relax and entertain.

Built in 2025

Essential Information

| | |
|-----------|-----------|
| MLS® # | E4449117 |
| Price | \$664,900 |
| Bedrooms | 5 |
| Bathrooms | 3.00 |



| | |
|----------------|------------------------|
| Full Baths | 3 |
| Square Footage | 2,432 |
| Acres | 0.00 |
| Year Built | 2025 |
| Type | Single Family |
| Sub-Type | Detached Single Family |
| Style | 2 Storey |
| Status | Active |

Community Information

| | |
|-------------|-----------------------|
| Address | 3248 Pelerin Crescent |
| Area | Beaumont |
| Subdivision | Place Chaleureuse |
| City | Beaumont |
| County | ALBERTA |
| Province | AB |
| Postal Code | T4X 2Z1 |

Amenities

| | |
|----------------|--|
| Amenities | Carbon Monoxide Detectors, Closet Organizers, Deck, Detectors Smoke, Hot Water Natural Gas, Hot Water Tankless, Low Flow Faucets/Shower, Smart/Program. Thermostat, Vaulted Ceiling, Vinyl Windows, Vacuum System-Roughed-In, HRV System, Natural Gas BBQ Hookup, Natural Gas Stove Hookup |
| Parking Spaces | 4 |
| Parking | Double Garage Attached |

Interior

| | |
|-------------------|---|
| Interior Features | ensuite bathroom |
| Appliances | Appliances Negotiable, Garage Control, Garage Opener, Hood Fan, Humidifier-Power(Furnace) |
| Heating | Forced Air-1, Natural Gas |
| Fireplace | Yes |
| Fireplaces | Insert |
| Stories | 2 |
| Has Basement | Yes |
| Basement | Full, Unfinished |

Exterior

| | |
|----------|-------------|
| Exterior | Wood, Vinyl |
|----------|-------------|

| | |
|-------------------|--|
| Exterior Features | Flat Site, No Back Lane, Playground Nearby, Schools, Shopping Nearby |
| Roof | Asphalt Shingles |
| Construction | Wood, Vinyl |
| Foundation | Slab |

Additional Information

| | |
|----------------|-----------------|
| Date Listed | July 22nd, 2025 |
| Days on Market | 55 |
| Zoning | Zone 82 |

DATA IS DEEMED RELIABLE BUT IS NOT GUARANTEED ACCURATE BY THE REALTORS® ASSOCIATION OF EDMONTON. COPYRIGHT 2025 BY THE REALTORS® ASSOCIATION OF EDMONTON. ALL RIGHTS RESERVED.Trademarks are owned or controlled by the Canadian Real Estate Association (CREA) and identify real estate professionals who are members of CREA (REALTOR®, REALTORS®) and/or the quality of services they provide (MLS®, Multiple Listing Service®)

Listing information last updated on September 15th, 2025 at 1:03pm MDT