

## \$289,000 - N/A, Edmonton

MLS® #E4447930

**\$289,000**

3 Bedroom, 2.50 Bathroom, 1,410 sqft

Condo / Townhouse on 0.00 Acres

Tawa, Edmonton, AB

\*Please note\* property is sold "as is where is at time of possession". No warranties or representations

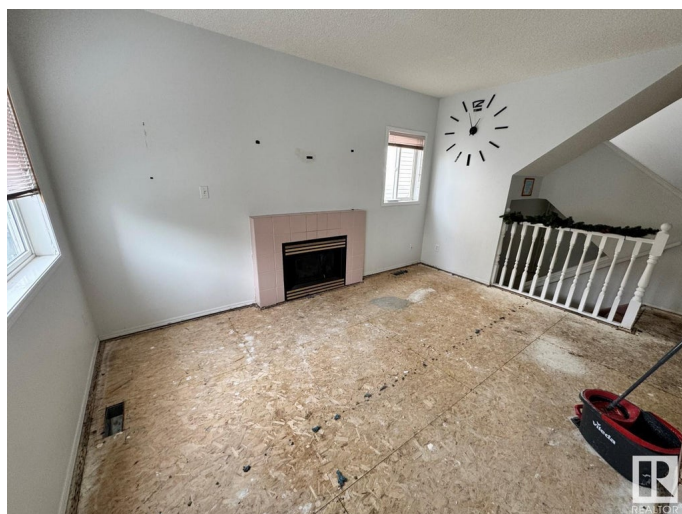
Built in 1993

### Essential Information

MLS® #	E4447930
Price	\$289,000
Bedrooms	3
Bathrooms	2.50
Full Baths	2
Half Baths	1
Square Footage	1,410
Acres	0.00
Year Built	1993
Type	Condo / Townhouse
Sub-Type	Half Duplex
Style	4 Level Split
Status	Active

### Community Information

Address	N/A
Area	Edmonton
Subdivision	Tawa
City	Edmonton
County	ALBERTA
Province	AB



Postal Code T6L 6X8

### Amenities

Amenities See Remarks  
Parking Single Garage Attached

### Interior

Appliances See Remarks  
Heating Forced Air-1, Natural Gas  
Stories 4  
Has Basement Yes  
Basement Full, Unfinished

### Exterior

Exterior Wood, Vinyl  
Exterior Features Fenced, Landscaped, Public Transportation, Schools, Shopping Nearby  
Roof Asphalt Shingles  
Construction Wood, Vinyl  
Foundation Concrete Perimeter

### Additional Information

Date Listed July 15th, 2025  
Days on Market 6  
Zoning Zone 29  
RE / Bank Owned Yes  
Condo Fee \$193

DATA IS DEEMED RELIABLE BUT IS NOT GUARANTEED ACCURATE BY THE REALTORS® ASSOCIATION OF EDMONTON. COPYRIGHT 2025 BY THE REALTORS® ASSOCIATION OF EDMONTON. ALL RIGHTS RESERVED.Trademarks are owned or controlled by the Canadian Real Estate Association (CREA) and identify real estate professionals who are members of CREA (REALTOR®, REALTORS®) and/or the quality of services they provide (MLS®, Multiple Listing Service®)

Listing information last updated on July 21st, 2025 at 4:32am MDT