

# \$580,000 - 1027 Graham Court, Edmonton

MLS® #E4445947

**\$580,000**

4 Bedroom, 3.50 Bathroom, 1,958 sqft

Single Family on 0.00 Acres

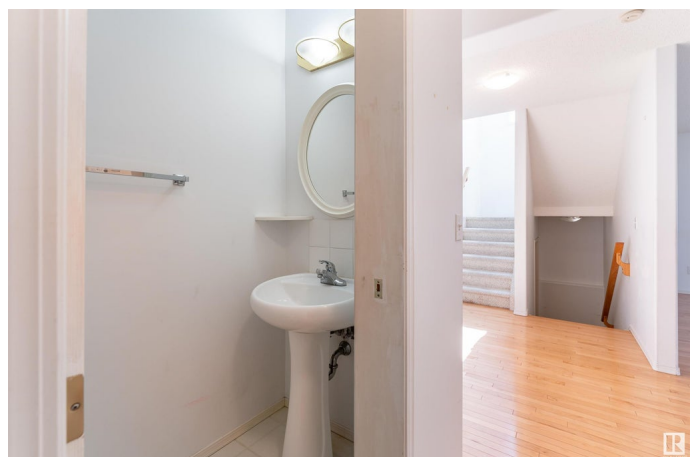
Glastonbury, Edmonton, AB

Welcome to this bright freshly painted 4 bed, 3.5 bath home in Glastonbury! With 1,958 sq. ft., this lovely home backs onto a peaceful park for extra privacy. The airy living room features a tile surround gas fireplace, and the spacious kitchen and dining area flow nicely out to the deck – perfect for family BBQs. Upstairs has 3 generous bedrooms, including a primary with walk-in closet and 3pc ensuite, plus another full bath. The fully finished WALK-OUT BASEMENT adds even more space with a huge rec room, a 4th bedroom, utility room, and 3pc bath. Enjoy a fenced backyard and a double attached garage for convenience. Great location near playgrounds, schools, public transit, and shopping – everything you need is close by!

Built in 2001

## Essential Information

MLS® #	E4445947
Price	\$580,000
Bedrooms	4
Bathrooms	3.50
Full Baths	3
Half Baths	1
Square Footage	1,958
Acres	0.00



Year Built	2001
Type	Single Family
Sub-Type	Detached Single Family
Style	2 Storey
Status	Active

### **Community Information**

Address	1027 Graham Court
Area	Edmonton
Subdivision	Glastonbury
City	Edmonton
County	ALBERTA
Province	AB
Postal Code	T5T 6L4

### **Amenities**

Amenities	Detectors Smoke, No Animal Home, No Smoking Home, Walkout Basement
Parking Spaces	4
Parking	Double Garage Attached

### **Interior**

Interior Features	ensuite bathroom
Appliances	Dishwasher-Built-In, Dryer, Freezer, Microwave Hood Fan, Refrigerator, Storage Shed, Stove-Electric, Washer, Window Coverings
Heating	Forced Air-1, Natural Gas
Fireplace	Yes
Fireplaces	Tile Surround
Stories	3
Has Basement	Yes
Basement	Full, Finished

### **Exterior**

Exterior	Wood, Vinyl
Exterior Features	Playground Nearby, Public Transportation, Schools, Shopping Nearby
Roof	Asphalt Shingles
Construction	Wood, Vinyl
Foundation	Concrete Perimeter

### **Additional Information**

Date Listed July 4th, 2025

Days on Market 59

Zoning Zone 58

DATA IS DEEMED RELIABLE BUT IS NOT GUARANTEED ACCURATE BY THE REALTORS® ASSOCIATION OF EDMONTON. COPYRIGHT 2025 BY THE REALTORS® ASSOCIATION OF EDMONTON. ALL RIGHTS RESERVED. Trademarks are owned or controlled by the Canadian Real Estate Association (CREA) and identify real estate professionals who are members of CREA (REALTOR®, REALTORS®) and/or the quality of services they provide (MLS®, Multiple Listing Service®)

Listing information last updated on September 1st, 2025 at 2:32am MDT