

\$175,000 - 354 10520 120 Street, Edmonton

MLS® #E4444704

\$175,000

2 Bedroom, 2.00 Bathroom, 781 sqft

Condo / Townhouse on 0.00 Acres

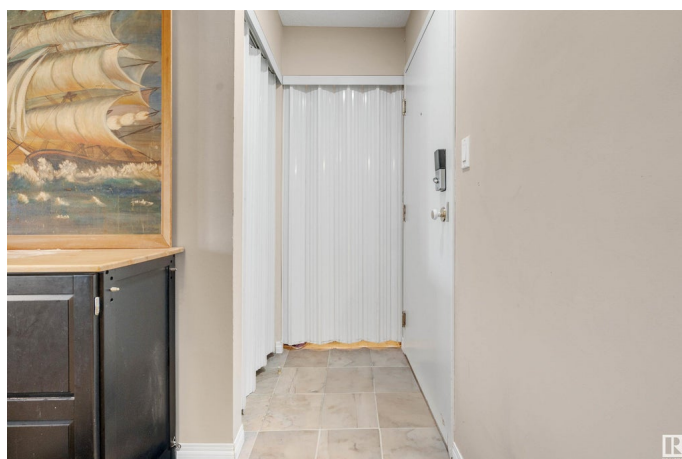
Queen Mary Park, Edmonton, AB

BEAUTIFULLY LAID OUT & PERFECTLY LOCATED! Nestled in a quiet area just outside the HEART OF DOWNTOWN you'll find this SPACIOUS 2 BED, 2 BATH close to the Brewery District, Manchester Square, and Grant MacEwan University! Enjoy nearly 800 SQFT of OPEN-CONCEPT living with a functional layout, a WALK-IN CLOSET and 4PC ENSUITE bathroom off the primary bedroom, and a second full bath with BUILT-IN ORGANIZERS. The kitchen opens to the dining and living room—ideal for everyday living and entertaining. This unit also offers IN-SUITE LAUNDRY, a dedicated STORAGE ROOM, ASSIGNED PARKING STALL, additional SHELIVING, and a PEACEFUL, SAFE NEIGHBOURHOOD with easy access to downtown without the noise. A fantastic opportunity for professionals, downsizers, or investors!

Built in 1994

Essential Information

| | |
|----------------|-----------|
| MLS® # | E4444704 |
| Price | \$175,000 |
| Bedrooms | 2 |
| Bathrooms | 2.00 |
| Full Baths | 2 |
| Square Footage | 781 |



| | |
|------------|------------------------|
| Acres | 0.00 |
| Year Built | 1994 |
| Type | Condo / Townhouse |
| Sub-Type | Lowrise Apartment |
| Style | Single Level Apartment |
| Status | Active |

Community Information

| | |
|-------------|----------------------|
| Address | 354 10520 120 Street |
| Area | Edmonton |
| Subdivision | Queen Mary Park |
| City | Edmonton |
| County | ALBERTA |
| Province | AB |
| Postal Code | T5H 4L9 |

Amenities

| | |
|-----------|--|
| Amenities | Carbon Monoxide Detectors, Deck, Detectors Smoke, Parking-Visitor, Storage-In-Suite, See Remarks, Natural Gas BBQ Hookup |
| Parking | Stall |

Interior

| | |
|-------------------|--|
| Interior Features | ensuite bathroom |
| Appliances | Dishwasher-Built-In, Hood Fan, Oven-Microwave, Refrigerator, Stacked Washer/Dryer, Stove-Electric, Window Coverings, See Remarks |
| Heating | Baseboard, Hot Water, Natural Gas |
| # of Stories | 4 |
| Stories | 1 |
| Has Basement | Yes |
| Basement | None, No Basement |

Exterior

| | |
|-------------------|--|
| Exterior | Wood, Stucco |
| Exterior Features | Backs Onto Park/Trees, Playground Nearby, Public Transportation, Schools, Shopping Nearby, See Remarks |
| Roof | Asphalt Shingles |
| Construction | Wood, Stucco |
| Foundation | Concrete Perimeter |

Additional Information

| | |
|----------------|-----------------|
| Date Listed | June 27th, 2025 |
| Days on Market | 8 |
| Zoning | Zone 08 |
| Condo Fee | \$402 |

DATA IS DEEMED RELIABLE BUT IS NOT GUARANTEED ACCURATE BY THE REALTORS® ASSOCIATION OF EDMONTON. COPYRIGHT 2025 BY THE REALTORS® ASSOCIATION OF EDMONTON. ALL RIGHTS RESERVED. Trademarks are owned or controlled by the Canadian Real Estate Association (CREA) and identify real estate professionals who are members of CREA (REALTOR®, REALTORS®) and/or the quality of services they provide (MLS®, Multiple Listing Service®)

Listing information last updated on July 5th, 2025 at 7:17pm MDT