

\$599,999 - 4417 33 Street, Edmonton

MLS® #E4444195

\$599,999

4 Bedroom, 3.00 Bathroom, 2,705 sqft

Single Family on 0.00 Acres

Larkspur, Edmonton, AB

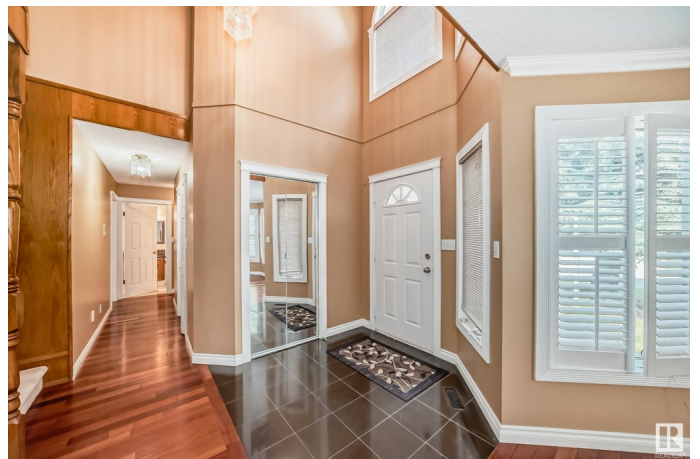
Welcome to this updated 2705 SQ FT house in Fountain Lake. Upon entry you will be greeted with a grand foyer and a gorgeous spiral staircase, which leads to a formal spacious living room and dining room. The main floor features an open layout with hardwood flooring. The kitchen has brand new stainless steel appliances, a nice size island with granite counters and large pantry. The sunken family room boasts a gas fireplace and built in shelving. The main floor is complete with a bedroom, full bathroom, and laundry. Upstairs features a large master bedroom with dual sinks, jacuzzi and walk-in closet. 2 additional bedrooms and an open loft complete the upper level. The large pie shaped lot includes a generous size back yard with a covered deck that can be used year-round. The home has an oversized double garage and an extra parking pad for RV or extra car. This property features a new roof (2014), 2 furnaces (replaced in 2017), newer windows (2017), large hot water tank (2022). The unfinished basement awaits

Built in 1990

Essential Information

MLS® # E4444195

Price \$599,999



Bedrooms	4
Bathrooms	3.00
Full Baths	3
Square Footage	2,705
Acres	0.00
Year Built	1990
Type	Single Family
Sub-Type	Detached Single Family
Style	2 Storey
Status	Active

Community Information

Address	4417 33 Street
Area	Edmonton
Subdivision	Larkspur
City	Edmonton
County	ALBERTA
Province	AB
Postal Code	T6T 1E9

Amenities

Amenities	See Remarks
Parking	Double Garage Attached, RV Parking

Interior

Interior Features	ensuite bathroom
Appliances	Dishwasher-Built-In, Dryer, Fan-Ceiling, Garage Opener, Hood Fan, Oven-Microwave, Refrigerator, Stove-Electric, Vacuum Systems, Washer, See Remarks
Heating	Forced Air-2, Natural Gas
Fireplace	Yes
Fireplaces	Tile Surround
Stories	2
Has Basement	Yes
Basement	Full, Unfinished

Exterior

Exterior	Wood, Vinyl
Exterior Features	Cul-De-Sac, Flat Site, Landscaped, Playground Nearby, Public

	Transportation, Schools, Shopping Nearby, See Remarks
Roof	Asphalt Shingles
Construction	Wood, Vinyl
Foundation	Concrete Perimeter

Additional Information

Date Listed	June 25th, 2025
Days on Market	23
Zoning	Zone 30

DATA IS DEEMED RELIABLE BUT IS NOT GUARANTEED ACCURATE BY THE REALTORS® ASSOCIATION OF EDMONTON. COPYRIGHT 2025 BY THE REALTORS® ASSOCIATION OF EDMONTON. ALL RIGHTS RESERVED. Trademarks are owned or controlled by the Canadian Real Estate Association (CREA) and identify real estate professionals who are members of CREA (REALTOR®, REALTORS®) and/or the quality of services they provide (MLS®, Multiple Listing Service®)

Listing information last updated on July 17th, 2025 at 10:18pm MDT