

\$655,000 - 9113 155 Street, Edmonton

MLS® #E4443433

\$655,000

4 Bedroom, 3.50 Bathroom, 1,442 sqft
Single Family on 0.00 Acres

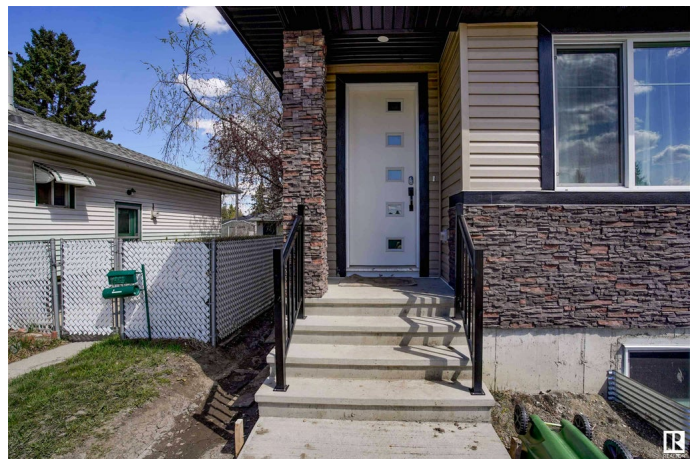
Jasper Park, Edmonton, AB

Check out this beautiful home in Jasper Park/Sherwood community. Sensible use of space with open concept main floor with huge windows for lighting and ventilation. Large great room with fireplace with huge kitchen and nook areas. Fully finished legal basement suite, full deck, with double detached garage. All appliances are included on the main floor and basement. This home is suitable for all buyers and is close to all amenities, transportation, schools and less than 10 mins drive to the West Edmonton Mall. Perfect for investors and first time home buyers

Built in 2021

Essential Information

MLS® #	E4443433
Price	\$655,000
Bedrooms	4
Bathrooms	3.50
Full Baths	3
Half Baths	1
Square Footage	1,442
Acres	0.00
Year Built	2021
Type	Single Family
Sub-Type	Half Duplex
Style	2 Storey



Status	Active
--------	--------

Community Information

Address	9113 155 Street
Area	Edmonton
Subdivision	Jasper Park
City	Edmonton
County	ALBERTA
Province	AB
Postal Code	T5R 1W6

Amenities

Amenities	Air Conditioner, Carbon Monoxide Detectors, Ceiling 9 ft., Deck
Parking	Double Garage Detached

Interior

Interior Features	ensuite bathroom
Appliances	Air Conditioning-Central, Garage Control, Garage Opener, Hood Fan, Microwave Hood Fan, Dryer-Two, Refrigerators-Two, Stoves-Two, Washers-Two, Dishwasher-Two, Curtains and Blinds
Heating	Forced Air-1, Natural Gas
Fireplace	Yes
Fireplaces	Remote Control
Stories	3
Has Suite	Yes
Has Basement	Yes
Basement	Full, Finished

Exterior

Exterior	Wood, Stone, Vinyl
Exterior Features	Playground Nearby, Public Transportation, Schools
Roof	Asphalt Shingles
Construction	Wood, Stone, Vinyl
Foundation	Concrete Perimeter

Additional Information

Date Listed	June 20th, 2025
Days on Market	54
Zoning	Zone 22

DATA IS DEEMED RELIABLE BUT IS NOT GUARANTEED ACCURATE BY THE REALTORS® ASSOCIATION OF EDMONTON. COPYRIGHT 2025 BY THE REALTORS® ASSOCIATION OF EDMONTON. ALL RIGHTS RESERVED. Trademarks are owned or controlled by the Canadian Real Estate Association (CREA) and identify real estate professionals who are members of CREA (REALTOR®, REALTORS®) and/or the quality of services they provide (MLS®, Multiple Listing Service®)

Listing information last updated on August 12th, 2025 at 10:17pm MDT