

\$399,000 - 8905 156 Street, Edmonton

MLS® #E4441776

\$399,000

5 Bedroom, 2.00 Bathroom, 1,102 sqft

Single Family on 0.00 Acres

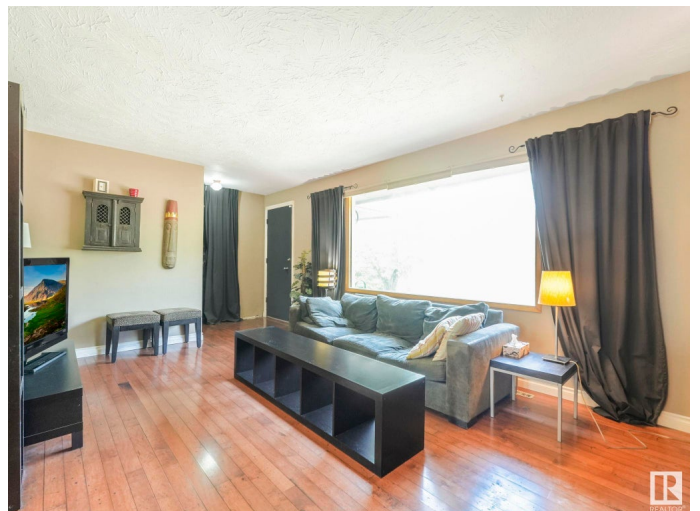
Jasper Park, Edmonton, AB

welcome to this well maintained bungalow located in the heart of the jasper place. third lovely 5 bed 2 full bath house offers over 100 sq ft of well developed space. main floor boasts upgraded engineered hardwood floors with a lovely wood burning fireplace, upgraded kitchen with a lovely dining room area and an addition to the main floor that is currently being used as an office The well kept primary bedroom offers space for a large kind size be. plus a good sized second main floor bedroom. The basement has been fully developed with two more bedrooms plus a spacious second family room and a 3 pcs bath. this home boast a double oversized heated & insulated garage ideal for a handy man. The back yard offer a large covered deck with tons of room for family and friends BBQ .located across the street from Meadowlark medical center public transportation and schools..

Built in 1959

Essential Information

MLS® #	E4441776
Price	\$399,000
Bedrooms	5
Bathrooms	2.00
Full Baths	2
Square Footage	1,102



Acres	0.00
Year Built	1959
Type	Single Family
Sub-Type	Detached Single Family
Style	Bungalow
Status	Active

Community Information

Address	8905 156 Street
Area	Edmonton
Subdivision	Jasper Park
City	Edmonton
County	ALBERTA
Province	AB
Postal Code	T5R 1Y6

Amenities

Amenities	Deck, See Remarks
Parking	Double Garage Detached, Heated, Insulated, Over Sized

Interior

Appliances	Dishwasher-Built-In, Dryer, Garage Opener, Refrigerator, Stove-Electric, Washer, Garage Heater
Heating	Forced Air-1, Natural Gas
Fireplace	Yes
Fireplaces	Brick Facing
Stories	2
Has Basement	Yes
Basement	Full, Finished

Exterior

Exterior	Wood, Stucco
Exterior Features	Back Lane, Fenced, Landscaped, Playground Nearby, Public Swimming Pool, Public Transportation, Schools, Shopping Nearby
Roof	Asphalt Shingles
Construction	Wood, Stucco
Foundation	Concrete Perimeter

School Information

Elementary	Meadowlark elementary
Middle	Hillcrest, Laurier Heights
High	Jasper Place ,F.X

Additional Information

Date Listed	June 9th, 2025
-------------	----------------

Days on Market	11
----------------	----

Zoning	Zone 22
--------	---------

DATA IS DEEMED RELIABLE BUT IS NOT GUARANTEED ACCURATE BY THE REALTORS® ASSOCIATION OF EDMONTON. COPYRIGHT 2025 BY THE REALTORS® ASSOCIATION OF EDMONTON. ALL RIGHTS RESERVED.Trademarks are owned or controlled by the Canadian Real Estate Association (CREA) and identify real estate professionals who are members of CREA (REALTOR®, REALTORS®) and/or the quality of services they provide (MLS®, Multiple Listing Service®)

Listing information last updated on June 19th, 2025 at 9:47pm MDT