

## \$399,900 - 9524 129a Avenue, Edmonton

MLS® #E4441613

**\$399,900**

3 Bedroom, 1.50 Bathroom, 1,012 sqft

Single Family on 0.00 Acres

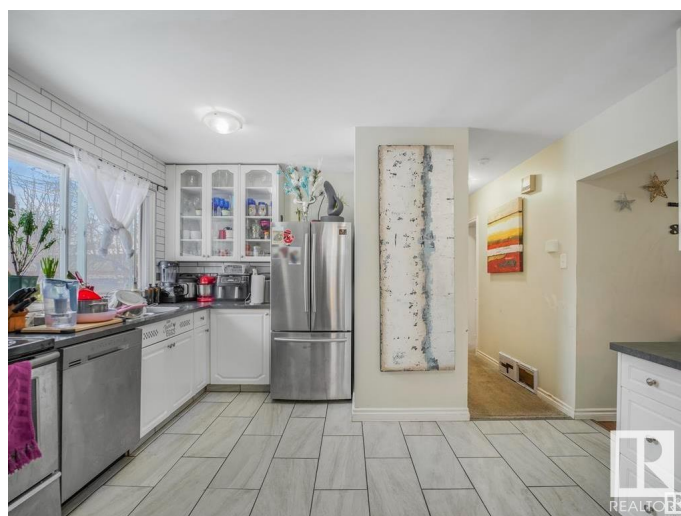
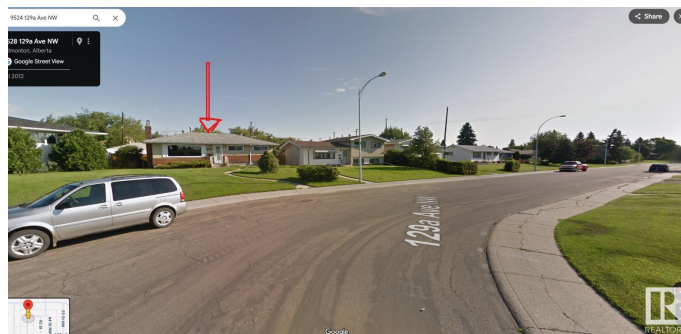
Killarney, Edmonton, AB

Centrally located basement home situated on a 7,869 sq. ft. lot with rear lane access. This property is within walking distance to all three levels of schools and just minutes from NAIT, with convenient access to 97 Street, 137 Street, and Yellowhead Trail. Features include an unfinished basement, oversized garage, RV parking, back lane access, and a dog run. The large lot may offer potential for future redevelopment or rezoning. Buyers are encouraged to contact the City of Edmonton for further information. Property is being sold in "as is, where is" condition without any expressed or implied warranties or representations. All measurements are approximate and must be verified by the buyer. Buyer is responsible for their own due diligence and must accept the Title Insurance provided by the seller.

Built in 1959

### Essential Information

MLS® #	E4441613
Price	\$399,900
Bedrooms	3
Bathrooms	1.50
Full Baths	1
Half Baths	1
Square Footage	1,012



Acres	0.00
Year Built	1959
Type	Single Family
Sub-Type	Detached Single Family
Style	Bungalow
Status	Active

### Community Information

Address	9524 129a Avenue
Area	Edmonton
Subdivision	Killarney
City	Edmonton
County	ALBERTA
Province	AB
Postal Code	T5E 0N8

### Amenities

Amenities	Vinyl Windows
Parking	Double Garage Detached, RV Parking

### Interior

Appliances	Dryer, Refrigerator, Stove-Electric, Washer
Heating	Forced Air-1, Natural Gas
Stories	1
Has Basement	Yes
Basement	Full, Unfinished

### Exterior

Exterior	Wood, Stucco
Exterior Features	Back Lane, Fenced
Roof	Asphalt Shingles
Construction	Wood, Stucco
Foundation	Concrete Perimeter

### Additional Information

Date Listed	June 10th, 2025
Days on Market	62
Zoning	Zone 02

DATA IS DEEMED RELIABLE BUT IS NOT GUARANTEED ACCURATE BY THE REALTORS® ASSOCIATION OF

EDMONTON. COPYRIGHT 2025 BY THE REALTORS® ASSOCIATION OF EDMONTON. ALL RIGHTS RESERVED.Trademarks are owned or controlled by the Canadian Real Estate Association (CREA) and identify real estate professionals who are members of CREA (REALTOR®, REALTORS®) and/or the quality of services they provide (MLS®, Multiple Listing Service®)

Listing information last updated on August 11th, 2025 at 5:17am MDT