

\$499,900 - 1816 Garnett Way, Edmonton

MLS® #E4439798

\$499,900

4 Bedroom, 3.00 Bathroom, 1,863 sqft

Single Family on 0.00 Acres

Glastonbury, Edmonton, AB

Welcome to this beautifully maintained home in the sought-after neighbourhood of Glastonbury. This 2-storey gem with a fully finished basement offers the perfect blend of space, comfort, and functionality. Featuring 4 bedrooms, a main floor office, 3.5 bathrooms, and a double attached garage, it's ideal for modern living. The open-concept main floor is warm and inviting, with a dining area that opens onto a spacious deck—perfect for summer entertaining. The finished basement includes a wet bar, fridge, and dishwasher, making it great for guests or hosting. Enjoy the large backyard, ideal for relaxing or play. Recent updates include shingles (2016), A/C, hot water tank (2021), furnace (2021), siding (2024), and a new deck and pergola (2024). Conveniently located just 10 minutes from schools and shopping, and under 15 minutes to West Edmonton Mall. With quick access to Whitemud Drive and Anthony Henday, commuting is a breeze. Don't miss this exceptional opportunity!

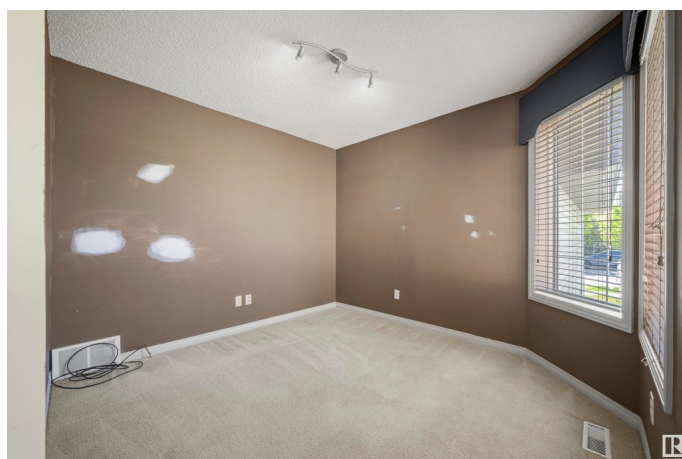
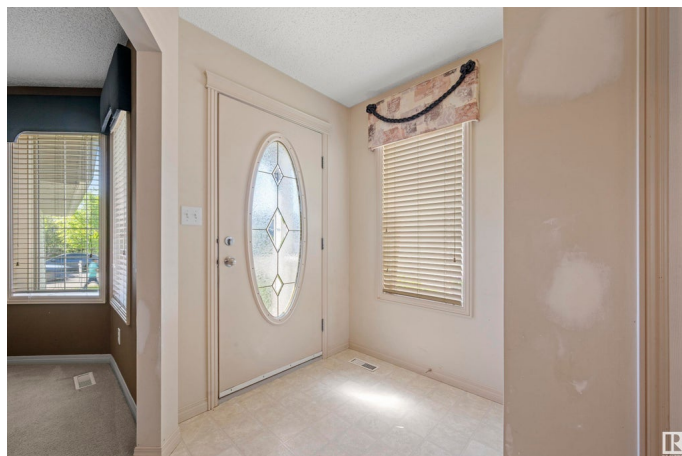
Built in 2000

Essential Information

MLS® # E4439798

Price \$499,900

Bedrooms 4



Bathrooms	3.00
Full Baths	2
Half Baths	2
Square Footage	1,863
Acres	0.00
Year Built	2000
Type	Single Family
Sub-Type	Detached Single Family
Style	2 Storey
Status	Active

Community Information

Address	1816 Garnett Way
Area	Edmonton
Subdivision	Glastonbury
City	Edmonton
County	ALBERTA
Province	AB
Postal Code	T5T 6R1

Amenities

Amenities	See Remarks
Parking Spaces	4
Parking	Double Garage Attached

Interior

Interior Features	ensuite bathroom
Appliances	Dryer, Refrigerator, Stove-Electric, Washer, Window Coverings, See Remarks, Refrigerators-Two, Dishwasher-Two
Heating	Forced Air-1, Natural Gas
Fireplace	Yes
Fireplaces	Mantel
Stories	3
Has Basement	Yes
Basement	Full, Finished

Exterior

Exterior	Wood, Vinyl
Exterior Features	Flat Site, Landscaped

Roof	Asphalt Shingles
Construction	Wood, Vinyl
Foundation	Concrete Perimeter

School Information

Elementary	Kim Hung School
Middle	Kim Hung School
High	Jasper Place School

Additional Information

Date Listed	June 1st, 2025
Days on Market	6
Zoning	Zone 58
HOA Fees	150
HOA Fees Freq.	Annually

DATA IS DEEMED RELIABLE BUT IS NOT GUARANTEED ACCURATE BY THE REALTORS® ASSOCIATION OF EDMONTON. COPYRIGHT 2025 BY THE REALTORS® ASSOCIATION OF EDMONTON. ALL RIGHTS RESERVED. Trademarks are owned or controlled by the Canadian Real Estate Association (CREA) and identify real estate professionals who are members of CREA (REALTOR®, REALTORS®) and/or the quality of services they provide (MLS®, Multiple Listing Service®)

Listing information last updated on June 7th, 2025 at 11:47am MDT