

\$469,000 - 1158 68 Street, Edmonton

MLS® #E4439112

\$469,000

2 Bedroom, 2.00 Bathroom, 1,272 sqft

Single Family on 0.00 Acres

Menisa, Edmonton, AB

Welcome to this custom bungalow featuring over 1,260 SqFt of above grade living space plus a beautifully finished basement, sitting on an incredible 1/3 acre lot with RV parking access! Enjoy numerous upgrades that have been thoughtfully updated over the years such as vinyl siding, PVC windows, newer washer (2023), new storage shed, hot water tank & furnace circuit board (2024) & 330 feet of 6' vinyl fence (2022). The main floor features a stone tile entry, a bright living room with gas fireplace, dining room with built-in china cabinet and an upgraded eat-in kitchen with Kitchencraft European cabinetry. You will also find 2 spacious bedrooms plus a home office, including a primary suite with laminate flooring & dual California Closets. The basement impresses complete with an English style bar in the family room, a large den, 3-piece bath & an exercise/storage area with flex space. The 1.5 car heated garage is fully insulated with a steel overhead door. A rare find with space, charm & upgrades throughout!

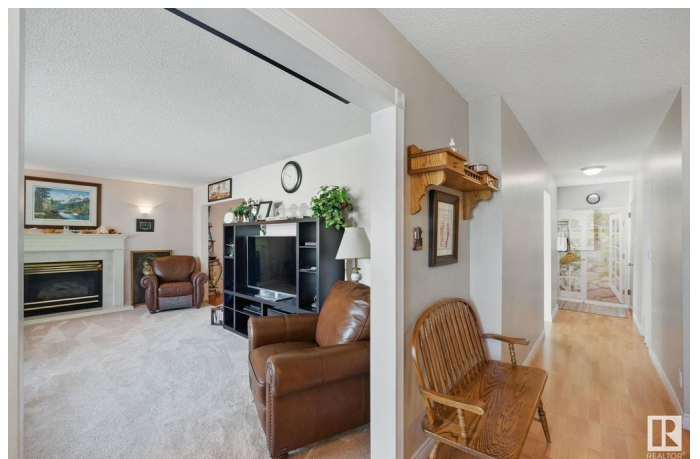
Built in 1965

Essential Information

MLS® # E4439112

Price \$469,000

Bedrooms 2



Bathrooms	2.00
Full Baths	2
Square Footage	1,272
Acres	0.00
Year Built	1965
Type	Single Family
Sub-Type	Detached Single Family
Style	Bungalow
Status	Active

Community Information

Address	1158 68 Street
Area	Edmonton
Subdivision	Menisa
City	Edmonton
County	ALBERTA
Province	AB
Postal Code	T6K 3K4

Amenities

Amenities	See Remarks
Parking	Heated, Insulated, Over Sized, RV Parking, Single Garage Attached

Interior

Appliances	Dryer, Garage Control, Garage Opener, Refrigerator, Storage Shed, Stove-Electric, Washer, Window Coverings
Heating	Forced Air-1, Natural Gas
Stories	2
Has Basement	Yes
Basement	Full, Finished

Exterior

Exterior	Wood, Vinyl
Exterior Features	Cul-De-Sac, Fenced, Landscaped, Playground Nearby, Public Transportation, Schools, Shopping Nearby, Treed Lot
Roof	Asphalt Shingles
Construction	Wood, Vinyl
Foundation	Concrete Perimeter

Additional Information

Date Listed May 29th, 2025

Days on Market 2

Zoning Zone 29

DATA IS DEEMED RELIABLE BUT IS NOT GUARANTEED ACCURATE BY THE REALTORS® ASSOCIATION OF EDMONTON. COPYRIGHT 2025 BY THE REALTORS® ASSOCIATION OF EDMONTON. ALL RIGHTS RESERVED. Trademarks are owned or controlled by the Canadian Real Estate Association (CREA) and identify real estate professionals who are members of CREA (REALTOR®, REALTORS®) and/or the quality of services they provide (MLS®, Multiple Listing Service®)

Listing information last updated on May 31st, 2025 at 2:02pm MDT