

## \$759,900 - 20708 90 Avenue, Edmonton

MLS® #E4439032

**\$759,900**

4 Bedroom, 3.50 Bathroom, 2,746 sqft

Single Family on 0.00 Acres

Suder Greens, Edmonton, AB

Over 4,000 SqFt of finished living space, this meticulously maintained estate home sits on a pie-shaped lot in a quiet cul-de-sac, just steps from Lewis Estates Golf Course. The grand 18'™ open-to-above foyer leads to a main floor with a dedicated office, formal dining room, and multiple living areas. The gourmet kitchen and breakfast nook flow into the family room, boasting a gas fireplace and soaring 18'™ ceilings. Upstairs, the massive owner's suite features multiple sitting areas, a generous walk-in closet, and a spa-like 5-piece ensuite with a makeup counter. Two oversized bedrooms and a 5-piece main bath complete the upper level. The finished basement is perfect for entertaining, with a large rec room fully equipped with a wet bar, a guest bedroom, a gym (or 5th bedroom) & a full 4 piece bath. The beautifully landscaped yard includes a stamped concrete deck, gazebo, mature trees, and a serene fish pond. A true gem in an exclusive location!

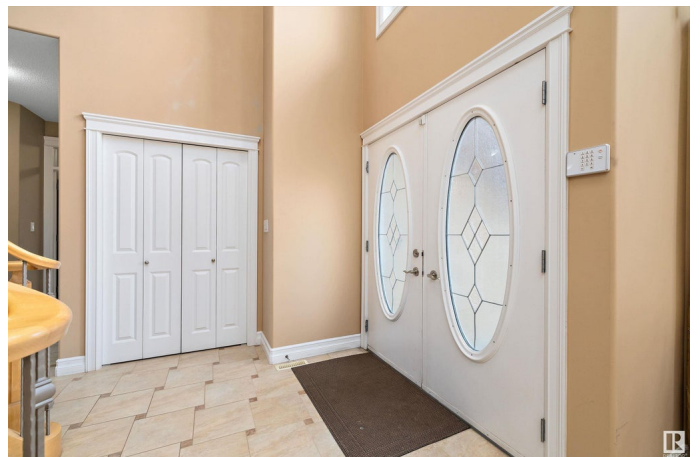
Built in 2007

### Essential Information

MLS® # E4439032

Price \$759,900

Bedrooms 4



Bathrooms	3.50
Full Baths	3
Half Baths	1
Square Footage	2,746
Acres	0.00
Year Built	2007
Type	Single Family
Sub-Type	Detached Single Family
Style	2 Storey
Status	Active

### **Community Information**

Address	20708 90 Avenue
Area	Edmonton
Subdivision	Suder Greens
City	Edmonton
County	ALBERTA
Province	AB
Postal Code	T5T 1T4

### **Amenities**

Amenities	Deck
Parking	Double Garage Attached

### **Interior**

Interior Features	ensuite bathroom
Appliances	Air Conditioning-Central, Dishwasher-Built-In, Dryer, Garage Control, Garage Opener, Hood Fan, Refrigerator, Stove-Gas, Washer, Window Coverings, Wine/Beverage Cooler, Wet Bar
Heating	Forced Air-1, Natural Gas
Fireplace	Yes
Fireplaces	Direct Vent
Stories	3
Has Basement	Yes
Basement	Full, Finished

### **Exterior**

Exterior	Wood, Stucco
Exterior Features	Golf Nearby, No Through Road

Roof	Asphalt Shingles
Construction	Wood, Stucco
Foundation	Concrete Perimeter

**Additional Information**

Date Listed	May 28th, 2025
Days on Market	4
Zoning	Zone 58

DATA IS DEEMED RELIABLE BUT IS NOT GUARANTEED ACCURATE BY THE REALTORS® ASSOCIATION OF EDMONTON. COPYRIGHT 2025 BY THE REALTORS® ASSOCIATION OF EDMONTON. ALL RIGHTS RESERVED.Trademarks are owned or controlled by the Canadian Real Estate Association (CREA) and identify real estate professionals who are members of CREA (REALTOR®, REALTORS®) and/or the quality of services they provide (MLS®, Multiple Listing Service®)

Listing information last updated on June 1st, 2025 at 4:32pm MDT