

\$240,000 - 642 Saddleback Road, Edmonton

MLS® #E4438573

\$240,000

3 Bedroom, 2.00 Bathroom, 1,365 sqft

Condo / Townhouse on 0.00 Acres

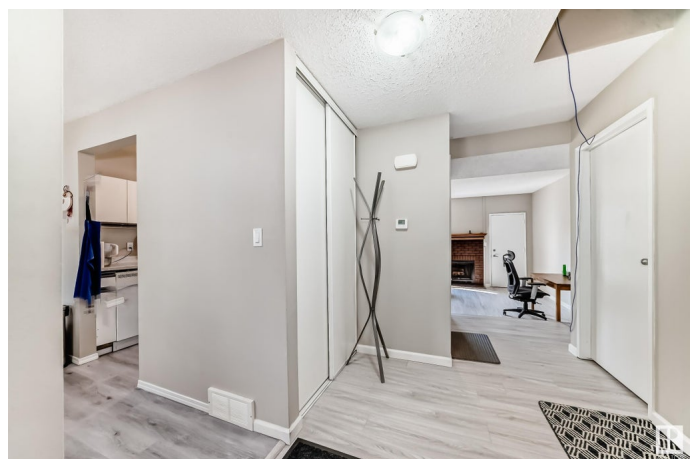
Blue Quill, Edmonton, AB

Well-maintained and tastefully updated, this spacious 3-bedroom townhouse is ideal for first-time buyers or investors! Located in a desirable family-friendly community in Southwest Edmonton, this home features fresh paint, newer carpet, and vinyl plank flooring throughout. The large sunken living room with a cozy fireplace flows into a formal dining area and a bright galley kitchen with updated countertops, sink, faucet, repainted cabinets, and a roomy dinette. The oversized primary bedroom includes a 2-piece ensuite and wall-to-wall closets. Two additional bedrooms and a full bath complete the upper level. Enjoy two front parking stalls and a spacious open basement ready for future development. The well-managed complex offers newer windows, vinyl siding, and more. Conveniently located near top-rated schools, LRT, parks, shopping, and scenic ravine trails!

Built in 1979

Essential Information

MLS® #	E4438573
Price	\$240,000
Bedrooms	3
Bathrooms	2.00
Full Baths	1
Half Baths	2



Square Footage	1,365
Acres	0.00
Year Built	1979
Type	Condo / Townhouse
Sub-Type	Townhouse
Style	2 Storey
Status	Active

Community Information

Address	642 Saddleback Road
Area	Edmonton
Subdivision	Blue Quill
City	Edmonton
County	ALBERTA
Province	AB
Postal Code	T6J 4Z3

Amenities

Amenities	See Remarks
Parking	2 Outdoor Stalls

Interior

Interior Features	ensuite bathroom
Appliances	Dishwasher-Built-In, Dryer, Hood Fan, Refrigerator, Stove-Electric, Washer
Heating	Forced Air-1, Natural Gas
Stories	2
Has Basement	Yes
Basement	Full, Unfinished

Exterior

Exterior	Wood, Vinyl
Exterior Features	Landscaped, Playground Nearby, Public Transportation, Schools, Shopping Nearby
Roof	Asphalt Shingles
Construction	Wood, Vinyl
Foundation	Concrete Perimeter

Additional Information

Date Listed May 26th, 2025

Days on Market 7

Zoning Zone 16

Condo Fee \$372

DATA IS DEEMED RELIABLE BUT IS NOT GUARANTEED ACCURATE BY THE REALTORS® ASSOCIATION OF EDMONTON. COPYRIGHT 2025 BY THE REALTORS® ASSOCIATION OF EDMONTON. ALL RIGHTS RESERVED. Trademarks are owned or controlled by the Canadian Real Estate Association (CREA) and identify real estate professionals who are members of CREA (REALTOR®, REALTORS®) and/or the quality of services they provide (MLS®, Multiple Listing Service®)

Listing information last updated on June 2nd, 2025 at 4:18pm MDT