

\$494,000 - 3830 112 Avenue, Edmonton

MLS® #E4437553

\$494,000

2 Bedroom, 2.00 Bathroom, 1,311 sqft
Single Family on 0.00 Acres

Beverly Heights, Edmonton, AB

Excellent investment opportunity in Beverley Hts! Original home on a double sized lot (approx 100' x 119') along a quiet tree lined avenue. Blocks away from Ada Boulevard and the river valley.

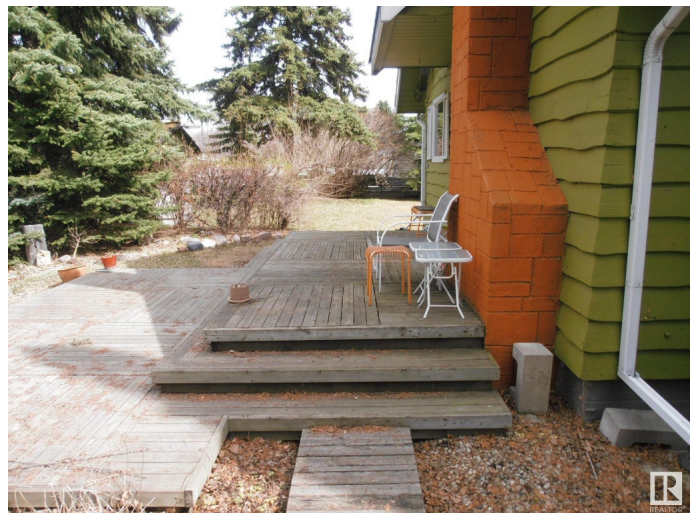
Built in 1943

Essential Information

MLS® #	E4437553
Price	\$494,000
Bedrooms	2
Bathrooms	2.00
Full Baths	2
Square Footage	1,311
Acres	0.00
Year Built	1943
Type	Single Family
Sub-Type	Detached Single Family
Style	1 and Half Storey
Status	Active

Community Information

Address	3830 112 Avenue
Area	Edmonton
Subdivision	Beverly Heights
City	Edmonton
County	ALBERTA



Province AB
Postal Code T5W 0M6

Amenities

Amenities See Remarks
Parking Double Garage Detached, Parking Pad Cement/Paved

Interior

Appliances Garage Control, Garage Opener
Heating Forced Air-1, Natural Gas
Stories 2
Has Basement Yes
Basement Full, Partially Finished

Exterior

Exterior Wood
Exterior Features Back Lane, Flat Site, See Remarks
Roof Asphalt Shingles
Construction Wood
Foundation Block

Additional Information

Date Listed May 21st, 2025
Days on Market 88
Zoning Zone 23

DATA IS DEEMED RELIABLE BUT IS NOT GUARANTEED ACCURATE BY THE REALTORS® ASSOCIATION OF EDMONTON. COPYRIGHT 2025 BY THE REALTORS® ASSOCIATION OF EDMONTON. ALL RIGHTS RESERVED. Trademarks are owned or controlled by the Canadian Real Estate Association (CREA) and identify real estate professionals who are members of CREA (REALTOR®, REALTORS®) and/or the quality of services they provide (MLS®, Multiple Listing Service®)

Listing information last updated on August 17th, 2025 at 8:47pm MDT