

## \$339,800 - 113 2336 Aspen Trail, Sherwood Park

MLS® #E4436676

**\$339,800**

3 Bedroom, 2.50 Bathroom, 1,450 sqft  
Condo / Townhouse on 0.00 Acres

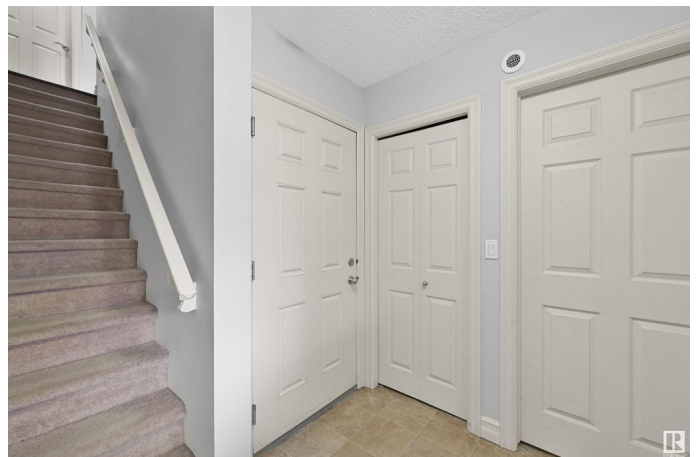
Emerald Hills, Sherwood Park, AB

This spacious 3 bedroom/3 bath/3-storey home in desirable Emerald Hills. Main floor boasts quality finishings, gorgeous open concept living space and upgraded kitchen, including granite counters, large island & walk-in pantry. Living room features a large attached balcony to enjoy the fresh air and green space. Main level complete w/ 2pc bathroom and laundry. Upper level boasts 3 well-sized bedrooms. Primary bedroom has 3pc ensuite w/ a large walk-in shower & an oversized closet. Plus 2nd shared 4pc bathroom upstairs. Other features include a double attached garage, plenty of storage, energy-efficient mechanical including tankless hot water for a lower utility bill. This well maintained complex offers visitor parking and is conveniently located close to shopping & walking trails. Quick proximity to Yellowhead & Baseline Rd, schools & public transportation. A must see!

Built in 2012

### Essential Information

MLS® #	E4436676
Price	\$339,800
Bedrooms	3
Bathrooms	2.50
Full Baths	2



Half Baths	1
Square Footage	1,450
Acres	0.00
Year Built	2012
Type	Condo / Townhouse
Sub-Type	Townhouse
Style	3 Storey
Status	Active

### Community Information

Address	113 2336 Aspen Trail
Area	Sherwood Park
Subdivision	Emerald Hills
City	Sherwood Park
County	ALBERTA
Province	AB
Postal Code	T8H 0J1

### Amenities

Amenities	Detectors Smoke, Parking-Visitor, Patio
Parking	Double Garage Attached

### Interior

Interior Features	ensuite bathroom
Appliances	Dishwasher-Built-In, Dryer, Garage Control, Garage Opener, Microwave Hood Fan, Refrigerator, Stove-Electric, Washer, Window Coverings
Heating	Forced Air-1, Natural Gas
Stories	3
Has Basement	Yes
Basement	Partial, Finished

### Exterior

Exterior	Wood, Vinyl
Exterior Features	Landscaped, Playground Nearby, Public Swimming Pool, Public Transportation, Schools, Shopping Nearby
Roof	Asphalt Shingles
Construction	Wood, Vinyl
Foundation	Concrete Perimeter

### Additional Information

Date Listed	May 14th, 2025
Days on Market	10
Zoning	Zone 25
Condo Fee	\$344

DATA IS DEEMED RELIABLE BUT IS NOT GUARANTEED ACCURATE BY THE REALTORS® ASSOCIATION OF EDMONTON. COPYRIGHT 2025 BY THE REALTORS® ASSOCIATION OF EDMONTON. ALL RIGHTS RESERVED. Trademarks are owned or controlled by the Canadian Real Estate Association (CREA) and identify real estate professionals who are members of CREA (REALTOR®, REALTORS®) and/or the quality of services they provide (MLS®, Multiple Listing Service®)

Listing information last updated on May 23rd, 2025 at 9:47pm MDT