

\$269,900 - 87 16823 84 Street, Edmonton

MLS® #E4435220

\$269,900

2 Bedroom, 1.00 Bathroom, 1,067 sqft

Condo / Townhouse on 0.00 Acres

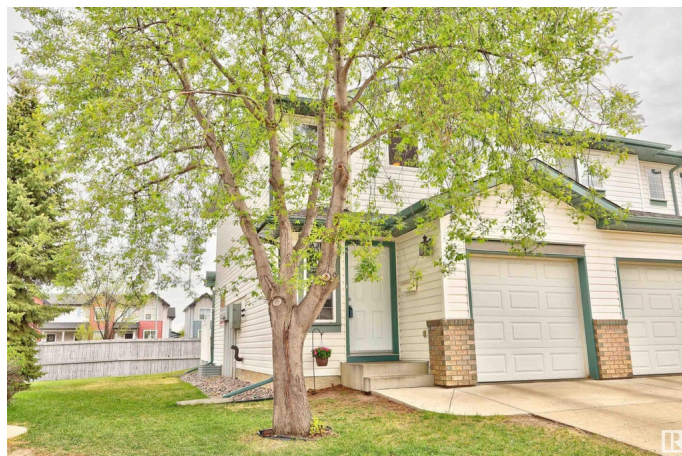
Klarvatten, Edmonton, AB

Welcome home to this well appointed end unit townhome located in Klarvatten. Spacious kitchen with ample counter space and all appliances. Refurbished cabinets in a modern neutral tone. Living room with feature gas fireplace. Patio doors lead to the East Facing outdoor space. Two bedrooms upstairs are a great size. Four piece bathroom with upgraded tub and tile surround. New Furnace in 2017 and New Hot Water Tank and AC in 2018. Washer and Dryer included as well as built in vacuum system. Single attached garage. Condo fees are \$295 per month. Well managed complex. Close to public transportation and shopping. Shows well.

Built in 2002

Essential Information

| | |
|----------------|-------------------|
| MLS® # | E4435220 |
| Price | \$269,900 |
| Bedrooms | 2 |
| Bathrooms | 1.00 |
| Full Baths | 1 |
| Square Footage | 1,067 |
| Acres | 0.00 |
| Year Built | 2002 |
| Type | Condo / Townhouse |
| Sub-Type | Townhouse |



| | |
|--------|----------|
| Style | 2 Storey |
| Status | Active |

Community Information

| | |
|-------------|--------------------|
| Address | 87 16823 84 Street |
| Area | Edmonton |
| Subdivision | Klarvatten |
| City | Edmonton |
| County | ALBERTA |
| Province | AB |
| Postal Code | T5Z 3S4 |

Amenities

| | |
|-----------|----------------------------------|
| Amenities | No Smoking Home, Parking-Visitor |
| Parking | Single Garage Attached |

Interior

| | |
|--------------|---|
| Appliances | Air Conditioning-Central, Dishwasher-Built-In, Dryer, Garage Opener, Refrigerator, Stove-Electric, Vacuum Systems, Washer, Window Coverings |
| Heating | Forced Air-1, Natural Gas |
| Fireplace | Yes |
| Fireplaces | Mantel |
| Stories | 2 |
| Has Basement | Yes |
| Basement | Full, Unfinished |

Exterior

| | |
|-------------------|-----------------------------------|
| Exterior | Wood, Brick, Vinyl |
| Exterior Features | Landscaped, Public Transportation |
| Roof | Asphalt Shingles |
| Construction | Wood, Brick, Vinyl |
| Foundation | Concrete Perimeter |

Additional Information

| | |
|----------------|---------------|
| Date Listed | May 8th, 2025 |
| Days on Market | 46 |
| Zoning | Zone 28 |
| Condo Fee | \$295 |

DATA IS DEEMED RELIABLE BUT IS NOT GUARANTEED ACCURATE BY THE REALTORS® ASSOCIATION OF EDMONTON. COPYRIGHT 2025 BY THE REALTORS® ASSOCIATION OF EDMONTON. ALL RIGHTS RESERVED.Trademarks are owned or controlled by the Canadian Real Estate Association (CREA) and identify real estate professionals who are members of CREA (REALTOR®, REALTORS®) and/or the quality of services they provide (MLS®, Multiple Listing Service®)

Listing information last updated on June 23rd, 2025 at 6:47am MDT