

## \$529,888 - 6469 King Wynd, Edmonton

MLS® #E4433134

**\$529,888**

4 Bedroom, 3.50 Bathroom, 1,638 sqft

Single Family on 0.00 Acres

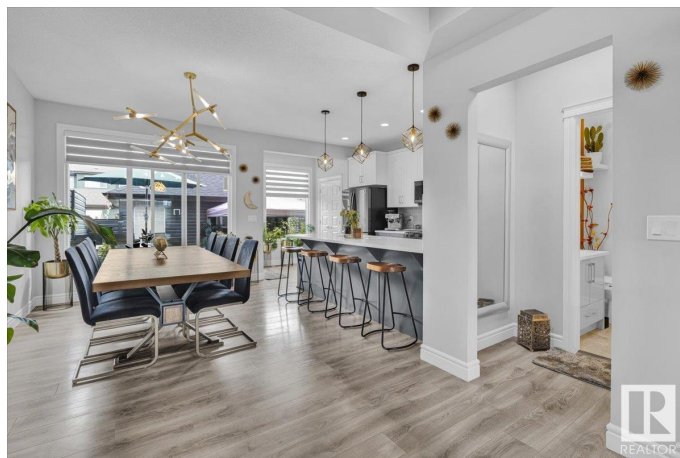
Keswick Area, Edmonton, AB

Modern, well-maintained half duplex in the sought-after Keswick community! Bright natural light pours into the open-concept layout, featuring a stylish kitchen with stainless steel appliances. Comes fully furnished - ready to enjoy with a developed basement and side entry. Detached garage includes a window, epoxy floor, R20 insulation, textured ceilings, and painted drywall. Enjoy the fully landscaped, fully fenced yard with a spacious two-level deckâ€”perfect for relaxing or entertaining. Move-in ready with upgraded finishes throughout, this home is steps from scenic ponds, parks, and walking trails. A perfect blend of style, comfort, and location!! HOA TBD

Built in 2020

### Essential Information

MLS® #	E4433134
Price	\$529,888
Bedrooms	4
Bathrooms	3.50
Full Baths	3
Half Baths	1
Square Footage	1,638
Acres	0.00
Year Built	2020



Type	Single Family
Sub-Type	Half Duplex
Style	2 Storey
Status	Active

### Community Information

Address	6469 King Wynd
Area	Edmonton
Subdivision	Keswick Area
City	Edmonton
County	ALBERTA
Province	AB
Postal Code	T6W 3Z9

### Amenities

Amenities	Deck, See Remarks
Parking	Double Garage Detached, Insulated, See Remarks

### Interior

Interior Features	ensuite bathroom
Appliances	Dishwasher-Built-In, Dryer, Furniture Included, Microwave Hood Fan, Refrigerator, Stove-Electric, Washer, Window Coverings
Heating	Forced Air-1, Natural Gas
Fireplace	Yes
Fireplaces	Insert
Stories	3
Has Basement	Yes
Basement	Full, Finished

### Exterior

Exterior	Wood, Vinyl, Hardie Board Siding
Exterior Features	Airport Nearby, Back Lane, Fenced, Landscaped, Playground Nearby, Public Transportation, Schools, Shopping Nearby, Stream/Pond, See Remarks
Roof	Asphalt Shingles
Construction	Wood, Vinyl, Hardie Board Siding
Foundation	Concrete Perimeter

### Additional Information

Date Listed	April 28th, 2025
-------------	------------------

Days on Market	3
Zoning	Zone 56
HOA Fees	1
HOA Fees Freq.	Annually

DATA IS DEEMED RELIABLE BUT IS NOT GUARANTEED ACCURATE BY THE REALTORS® ASSOCIATION OF EDMONTON. COPYRIGHT 2025 BY THE REALTORS® ASSOCIATION OF EDMONTON. ALL RIGHTS RESERVED. Trademarks are owned or controlled by the Canadian Real Estate Association (CREA) and identify real estate professionals who are members of CREA (REALTOR®, REALTORS®) and/or the quality of services they provide (MLS®, Multiple Listing Service®)

Listing information last updated on May 1st, 2025 at 7:32pm MDT