

## \$399,900 - 86 Circlewood Drive, Sherwood Park

MLS® #E4432939

**\$399,900**

4 Bedroom, 1.50 Bathroom, 1,180 sqft

Single Family on 0.00 Acres

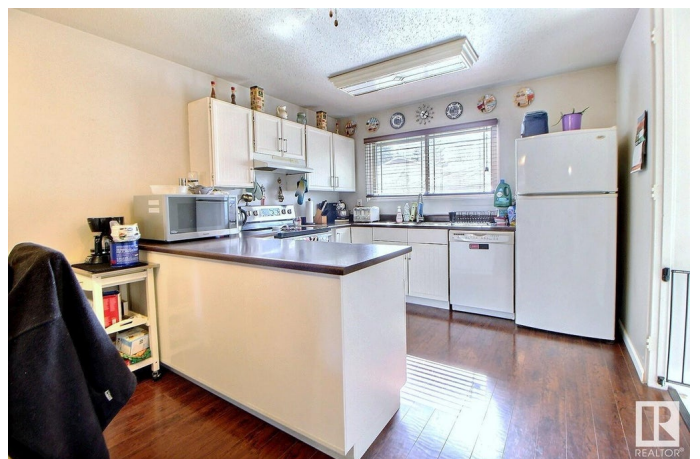
Maplewood (Sherwood Park), Sherwood Park, AB

Discover this charming bungalow in Maplewood, featuring 3+1 bedrooms, 1.5 bathroom, a partially finished basement, oversized single garage, and a large, private backyard. The updated eat-in kitchen offers modern white cabinetry and a beautiful built-in display hutch. Spacious living room offers a large picture window. The primary bedroom includes a 2-piece ensuite with cheater door access to the main 4-piece bathroom, which has a separate toilet and sink area. The partially finished basement provides recreation and storage space, requiring only flooring. Recent upgrades include the furnace and hot water tank (2018), shingles (2015), and windows (2013). The expansive, fully fenced backyard features a concrete patio, mature trees, and a storage shed.

Built in 1971

### Essential Information

MLS® #	E4432939
Price	\$399,900
Bedrooms	4
Bathrooms	1.50
Full Baths	1
Half Baths	1
Square Footage	1,180



Acres	0.00
Year Built	1971
Type	Single Family
Sub-Type	Detached Single Family
Style	Bungalow
Status	Active

### Community Information

Address	86 Circlewood Drive
Area	Sherwood Park
Subdivision	Maplewood (Sherwood Park)
City	Sherwood Park
County	ALBERTA
Province	AB
Postal Code	T8A 0K7

### Amenities

Amenities	Patio, R.V. Storage, Vinyl Windows
Parking	Single Garage Attached

### Interior

Interior Features	ensuite bathroom
Appliances	Dishwasher-Built-In, Garage Control, Garage Opener, Hood Fan, Refrigerator, Storage Shed, Stove-Electric, Window Coverings, See Remarks, Dryer-Two, Washers-Two
Heating	Forced Air-1, Natural Gas
Stories	2
Has Basement	Yes
Basement	Full, Finished

### Exterior

Exterior	Wood, Vinyl
Exterior Features	Fenced, Landscaped, Playground Nearby, Public Transportation, Schools, Shopping Nearby
Roof	Asphalt Shingles
Construction	Wood, Vinyl
Foundation	Concrete Perimeter

### Additional Information

Date Listed	April 25th, 2025
-------------	------------------

Days on Market 28

Zoning Zone 25

DATA IS DEEMED RELIABLE BUT IS NOT GUARANTEED ACCURATE BY THE REALTORS® ASSOCIATION OF EDMONTON. COPYRIGHT 2025 BY THE REALTORS® ASSOCIATION OF EDMONTON. ALL RIGHTS RESERVED. Trademarks are owned or controlled by the Canadian Real Estate Association (CREA) and identify real estate professionals who are members of CREA (REALTOR®, REALTORS®) and/or the quality of services they provide (MLS®, Multiple Listing Service®)

Listing information last updated on May 23rd, 2025 at 9:02pm MDT