

\$450,000 - 17935 84 Street, Edmonton

MLS® #E4432334

\$450,000

4 Bedroom, 3.00 Bathroom, 1,320 sqft
Single Family on 0.00 Acres

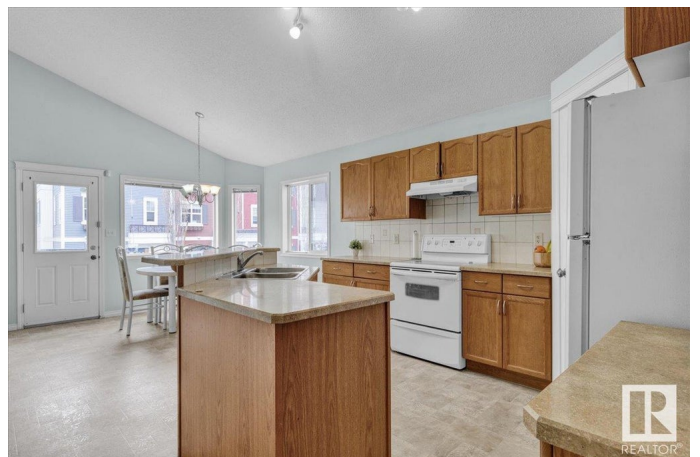
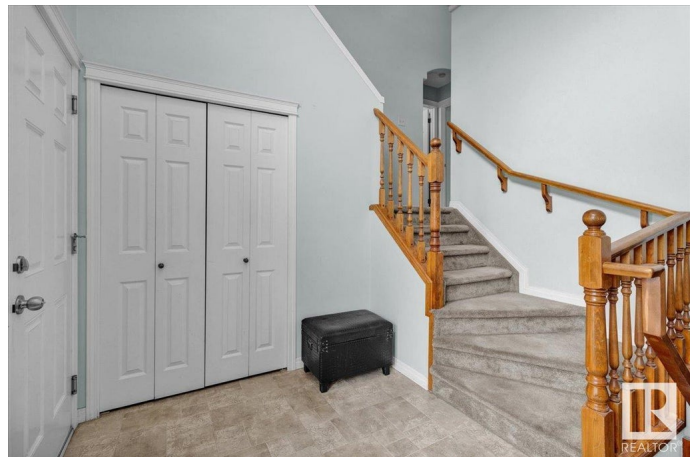
Klarvatten, Edmonton, AB

Welcome to Klarvatten. Located close to schools, shops, public transportation, & only steps away from the lake, you can't beat this location. The main floor has an open concept living space, w/ vaulted ceilings, perfect for entertaining. The kitchen has a corner pantry, some newer appliances, and an island that is the perfect height for an eating bar. The living room has new flooring, and a gas fireplace for all the cold winter nights. On a separate level, you have a HUGE primary room, w/ both a walk-in closet & 4pc ensuite. The basement is FULLY FINISHED with a large rec/ media room, full bedroom, and 4pc bathroom. The backyard has a large deck and plenty of space to entertain or garden! Other features include a newer furnace & HWT! For more details please visit the REALTOR'S Website.

Built in 2007

Essential Information

MLS® #	E4432334
Price	\$450,000
Bedrooms	4
Bathrooms	3.00
Full Baths	3
Square Footage	1,320
Acres	0.00



Year Built	2007
Type	Single Family
Sub-Type	Detached Single Family
Style	Bi-Level
Status	Active

Community Information

Address	17935 84 Street
Area	Edmonton
Subdivision	Klarvatten
City	Edmonton
County	ALBERTA
Province	AB
Postal Code	T5Z 0C7

Amenities

Amenities	Deck, Recreation Room/Centre
Parking Spaces	2
Parking	Double Garage Attached

Interior

Interior Features	ensuite bathroom
Appliances	Dishwasher-Built-In, Dryer, Garage Control, Garage Opener, Microwave Hood Fan, Refrigerator, Stove-Electric, Washer, See Remarks
Heating	Forced Air-1, Natural Gas
Stories	3
Has Basement	Yes
Basement	Full, Finished

Exterior

Exterior	Wood, Vinyl
Exterior Features	Playground Nearby, Public Transportation, Schools, Shopping Nearby
Roof	Asphalt Shingles
Construction	Wood, Vinyl
Foundation	Concrete Perimeter

School Information

Elementary	Lago Lindo/Bishop Gres.
Middle	Dickinsfield/Cardinal Leg.

High

Queen Eliz./Archbishop O'L

Additional Information

Date Listed April 23rd, 2025

Days on Market 1

Zoning Zone 28

DATA IS DEEMED RELIABLE BUT IS NOT GUARANTEED ACCURATE BY THE REALTORS® ASSOCIATION OF EDMONTON. COPYRIGHT 2025 BY THE REALTORS® ASSOCIATION OF EDMONTON. ALL RIGHTS RESERVED. Trademarks are owned or controlled by the Canadian Real Estate Association (CREA) and identify real estate professionals who are members of CREA (REALTOR®, REALTORS®) and/or the quality of services they provide (MLS®, Multiple Listing Service®)

Listing information last updated on April 24th, 2025 at 4:03pm MDT