

\$350,000 - 90 320 Secord Boulevard, Edmonton

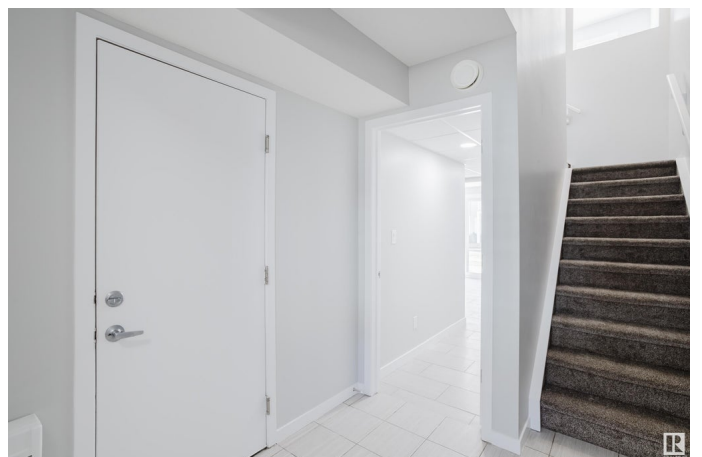
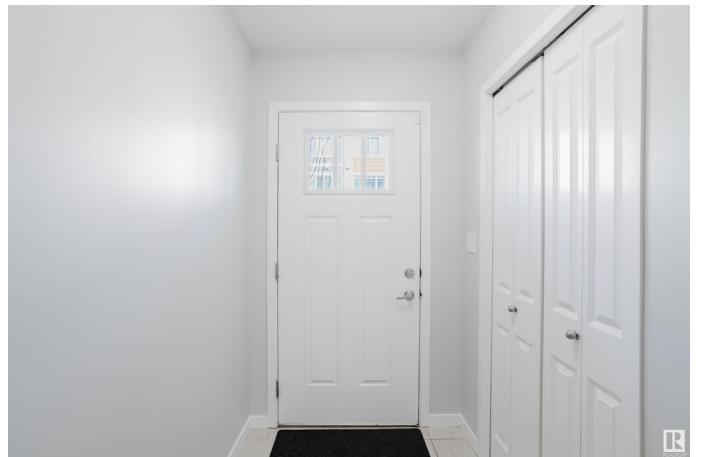
MLS® #E4430333

\$350,000

3 Bedroom, 2.50 Bathroom, 1,631 sqft
Condo / Townhouse on 0.00 Acres

Secord, Edmonton, AB

Modern. Stylish. Functional. Welcome to this one-of-a-kind 3-storey corner unit townhome in the vibrant community of Secord, mins from schools, shopping, restaurants, transit, and the future REC center. Step inside to discover a WALK-OUT lower level featuring a flexible space perfect as a bedroom or home office , complete with access to your own private patio. Upstairs, you'll love the open-concept main floor, designed for entertaining with a spacious living , a bright dining area, and a chef-inspired kitchen with a huge pantry, island, & loads of cabinetry. Sunlight pours in through of extra windows, & you can soak it all up from your oversized deck/balconyâ€”ideal for morning coffee or evening BBQs. The top floor features a massive primary suite with double closets and a full ensuite, plus a generously sized second bedroom and another full bath. Features include: Newly painted, new flooring, 9 foot ceiling, upstairs laundry, attached single garage, extended driveway for extra parking, and LOW condo fees



Built in 2019

Essential Information

MLS® #	E4430333
Price	\$350,000

Bedrooms	3
Bathrooms	2.50
Full Baths	2
Half Baths	1
Square Footage	1,631
Acres	0.00
Year Built	2019
Type	Condo / Townhouse
Sub-Type	Townhouse
Style	3 Storey
Status	Active

Community Information

Address	90 320 Secord Boulevard
Area	Edmonton
Subdivision	Secord
City	Edmonton
County	ALBERTA
Province	AB
Postal Code	T5T 7E8

Amenities

Amenities	Deck, Parking-Visitor
Parking Spaces	2
Parking	Single Garage Attached

Interior

Interior Features	ensuite bathroom
Appliances	Dishwasher-Built-In, Dryer, Garage Control, Garage Opener, Refrigerator, Stove-Electric, Washer, Window Coverings
Heating	Forced Air-1, Natural Gas
Stories	3
Has Basement	Yes
Basement	None, No Basement

Exterior

Exterior	Wood, Vinyl
Exterior Features	Low Maintenance Landscape, Not Fenced, Playground Nearby, Public Transportation, Schools, Shopping Nearby

Roof	Asphalt Shingles
Construction	Wood, Vinyl
Foundation	Slab

Additional Information

Date Listed	April 11th, 2025
Days on Market	2
Zoning	Zone 58
Condo Fee	\$247

DATA IS DEEMED RELIABLE BUT IS NOT GUARANTEED ACCURATE BY THE REALTORS® ASSOCIATION OF EDMONTON. COPYRIGHT 2025 BY THE REALTORS® ASSOCIATION OF EDMONTON. ALL RIGHTS RESERVED. Trademarks are owned or controlled by the Canadian Real Estate Association (CREA) and identify real estate professionals who are members of CREA (REALTOR®, REALTORS®) and/or the quality of services they provide (MLS®, Multiple Listing Service®)

Listing information last updated on April 13th, 2025 at 5:17pm MDT