

Courtesy Of . Armanpreet Singh Of Exp Realty

\$600,000 - 210 Crystal Creek Drive, Leduc

MLS® #E4428599

\$600,000

4 Bedroom, 3.00 Bathroom, 2,013 sqft

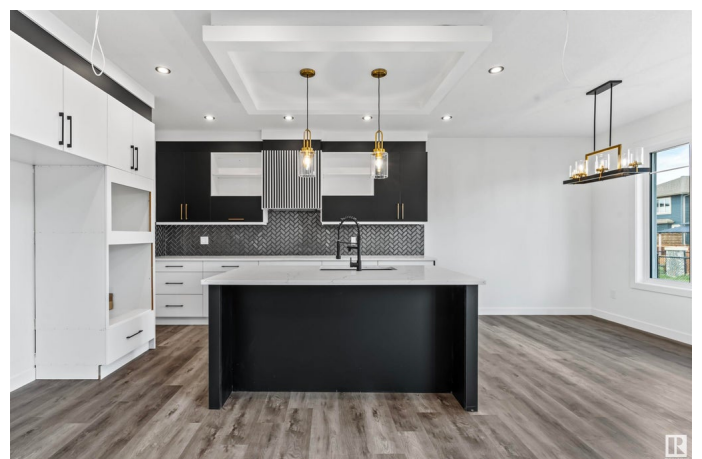
Single Family on 0.00 Acres

Crystal Creek_LEDU, Leduc, AB

Under Construction ! Choose your own finishes! BRAND-NEW LUXURY home BACKING ONTO A SCHOOL PARK for full privacy. Just under 2,100 sq. ft. home features 4 bedrooms, 3 full baths, a bonus room, and a MAIN FLOOR BEDROOM with FULL WASHROOM featuring a stand-up shower. HIGH-END FINISHES include luxury vinyl plank flooring, custom spindle railing, premium dual-tone cabinetry, quartz countertops, and MDF shelving throughout. The gourmet kitchen offers a SPICE KITCHEN for added convenience. The stunning OPEN-TO-ABOVE living area boasts an 18-FOOT CEILINGS, electric fireplace, and accent wall. INDENT CEILINGS with rope lighting and upgraded feature walls throughout the home add extra elegance. TRIPLE-PANE WINDOWS, a SIDE BASEMENT ENTRANCE, and a garage water drain enhance functionality. Additionally, the property offers 9-FT CEILINGS ON ALL LEVELS. Located beside a school, minutes from COSTCO, the EDMONTON OUTLET MALL, and the AIRPORT, you get quick access to all amenities. Photos from previous build.



FRONT ELEVATION



Built in 2025

Essential Information

MLS® #

E4428599

| | |
|----------------|------------------------|
| Price | \$600,000 |
| Bedrooms | 4 |
| Bathrooms | 3.00 |
| Full Baths | 3 |
| Square Footage | 2,013 |
| Acres | 0.00 |
| Year Built | 2025 |
| Type | Single Family |
| Sub-Type | Detached Single Family |
| Style | 2 Storey |
| Status | Active |

Community Information

| | |
|-------------|-------------------------|
| Address | 210 Crystal Creek Drive |
| Area | Leduc |
| Subdivision | Crystal Creek_LEDU |
| City | Leduc |
| County | ALBERTA |
| Province | AB |
| Postal Code | T9E 1N3 |

Amenities

| | |
|---------------|-------------------------------------------------------------------------------------------------------------------------------------------------------------------------------------------------------------------------------------|
| Amenities | Carbon Monoxide Detectors, Ceiling 9 ft., Closet Organizers, Detectors Smoke, Dugout Basement, Hot Water Electric, Insulation-Upgraded, No Animal Home, No Smoking Home, HRV System, Natural Gas BBQ Hookup, 9 ft. Basement Ceiling |
| Parking | Double Garage Attached |
| Is Waterfront | Yes |

Interior

| | |
|-------------------|-----------------------------------------|
| Interior Features | ensuite bathroom |
| Appliances | Garage Control, Garage Opener, Hood Fan |
| Heating | Forced Air-2, Electric |
| Fireplace | Yes |
| Fireplaces | Wall Mount |
| Stories | 2 |
| Has Basement | Yes |
| Basement | Full, Unfinished |

Exterior

| | |
|-------------------|---------------------------------------------------------------------------------------------------------------------------------------------------|
| Exterior | Wood, Stone, Vinyl, Hardie Board Siding |
| Exterior Features | Airport Nearby, Back Lane, Backs Onto Park/Trees, Playground Nearby, Schools, Shopping Nearby, Stream/Pond, Private Park Access, Partially Fenced |
| Roof | Asphalt Shingles |
| Construction | Wood, Stone, Vinyl, Hardie Board Siding |
| Foundation | Concrete Perimeter |

Additional Information

| | |
|----------------|-----------------|
| Date Listed | April 2nd, 2025 |
| Days on Market | 159 |
| Zoning | Zone 81 |

DATA IS DEEMED RELIABLE BUT IS NOT GUARANTEED ACCURATE BY THE REALTORS® ASSOCIATION OF EDMONTON. COPYRIGHT 2025 BY THE REALTORS® ASSOCIATION OF EDMONTON. ALL RIGHTS RESERVED.Trademarks are owned or controlled by the Canadian Real Estate Association (CREA) and identify real estate professionals who are members of CREA (REALTOR®, REALTORS®) and/or the quality of services they provide (MLS®, Multiple Listing Service®)

Listing information last updated on September 8th, 2025 at 4:32am MDT