

## \$187,500 - 801 10106 105 Street, Edmonton

MLS® #E4426350

**\$187,500**

2 Bedroom, 2.00 Bathroom, 1,540 sqft  
Condo / Townhouse on 0.00 Acres

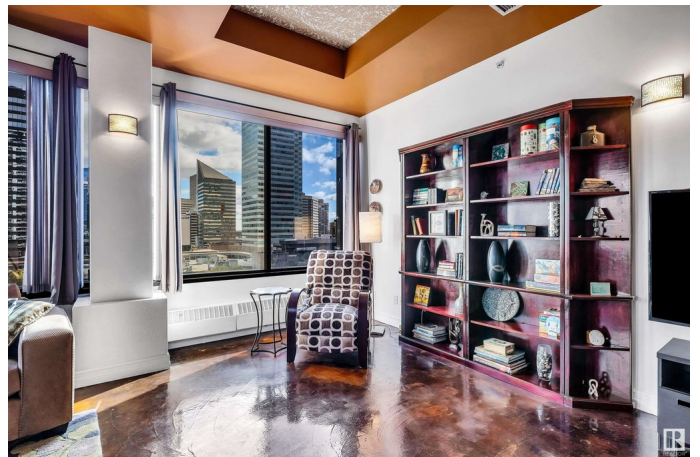
Downtown (Edmonton), Edmonton, AB

**OPEN CONCEPT LOFT! 2 BEDROOMS + 2 BATHS.** This 1,539 sq ft, 8th floor unit features an open layout with polished concrete & ceramic tile flooring, soaring 10 ft ceilings, and breathtaking panoramic views of downtown Edmonton. The spacious living room flows into an impressive kitchen, complete with a center island that seats two, an abundance of cabinets and ample counter space, all adjacent to the dining area - perfect for entertaining or intimate dinners. The primary bedroom includes a 4-pce ensuite bath & walk-in closet. The 2nd bedroom with a Murphy Bed can double as an office if required. The unit is finished with a second 3-pce bathroom and in-suite laundry for added convenience. 1 stall in parkade. Located across from a park currently being expanded and revitalized by the City, providing a beautiful outdoor space for relaxation. Enjoy great access to public transportation, allowing you to easily navigate the city, as well as proximity to excellent post-secondary schools & much more! **ONLY \$187,500.00**

Built in 1973

### Essential Information

MLS® #	E4426350
Price	\$187,500



Bedrooms	2
Bathrooms	2.00
Full Baths	2
Square Footage	1,540
Acres	0.00
Year Built	1973
Type	Condo / Townhouse
Sub-Type	Apartment High Rise
Style	Loft
Status	Active

### **Community Information**

Address	801 10106 105 Street
Area	Edmonton
Subdivision	Downtown (Edmonton)
City	Edmonton
County	ALBERTA
Province	AB
Postal Code	T5J 5E7

### **Amenities**

Amenities	Ceiling 10 ft., No Animal Home, No Smoking Home, Sprinkler System-Fire, Storage-In-Suite, Wall Unit-Built-In
Parking Spaces	1
Parking	Parkade

### **Interior**

Interior Features	ensuite bathroom
Appliances	Dryer, Microwave Hood Fan, Refrigerator, Stove-Electric, Washer
Heating	Baseboard, Natural Gas
# of Stories	11
Stories	1
Has Basement	Yes
Basement	None, No Basement

### **Exterior**

Exterior	Concrete
Exterior Features	Golf Nearby, Park/Reserve, Public Transportation, Schools, Shopping Nearby, View City, View Downtown

Roof	SBS Roofing System
Construction	Concrete
Foundation	Concrete Perimeter

**Additional Information**

Date Listed	March 19th, 2025
Days on Market	58
Zoning	Zone 12
Condo Fee	\$983

DATA IS DEEMED RELIABLE BUT IS NOT GUARANTEED ACCURATE BY THE REALTORS® ASSOCIATION OF EDMONTON. COPYRIGHT 2025 BY THE REALTORS® ASSOCIATION OF EDMONTON. ALL RIGHTS RESERVED.Trademarks are owned or controlled by the Canadian Real Estate Association (CREA) and identify real estate professionals who are members of CREA (REALTOR®, REALTORS®) and/or the quality of services they provide (MLS®, Multiple Listing Service®)

Listing information last updated on May 16th, 2025 at 1:32am MDT