

Courtesy Of Maninder S Grewal Of Exp Realty

# \$199,999 - 107 4835 104a Street, Edmonton

MLS® #E4425592

**\$199,999**

2 Bedroom, 1.00 Bathroom, 939 sqft  
Condo / Townhouse on 0.00 Acres

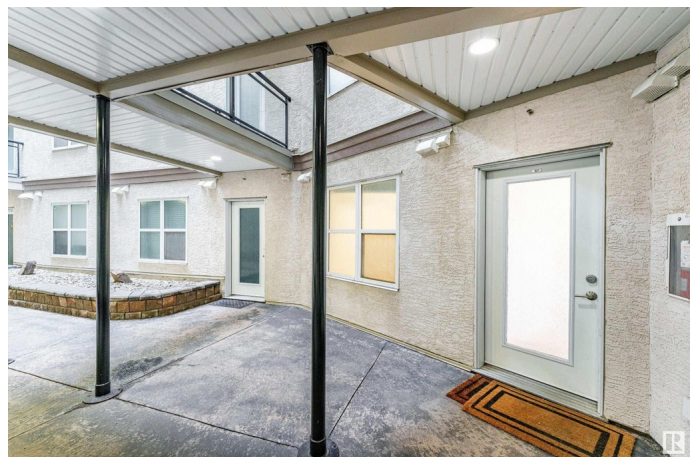
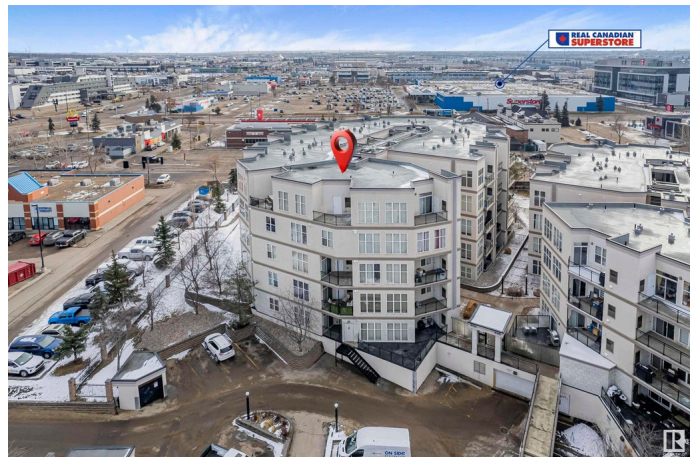
Empire Park, Edmonton, AB

**LOW CONDO FEES | 9 FT CEILINGS | BRIGHT & SPACIOUS** Welcome home! This beautifully kept 2-bedroom, 1-bath condo is the perfect blend of comfort and convenience. Whether you're a first-time buyer, downsizing, or looking for a smart investment, this place has it all! The open-concept layout feels bright and airy, with huge windows that bring in tons of natural light. The kitchen comes with a dishwasher, so no more scrubbing dishes after dinner. The primary bedroom has a walk-in closet, giving you all the storage you need. Step outside onto your cozy patio—a perfect spot to enjoy your morning coffee or unwind after a long day. And you won't have to worry about parking or laundry—this unit includes heated underground parking, a storage cage, and in-suite laundry for ultimate convenience. Located in an unbeatable area, you're just steps from Superstore, the Italian Centre, restaurants, public transit, a clinic, pharmacy, and more. Everything you need is right at your doorstep! Virtually staged.

Built in 2005

## Essential Information

MLS® #	E4425592
Price	\$199,999



Bedrooms	2
Bathrooms	1.00
Full Baths	1
Square Footage	939
Acres	0.00
Year Built	2005
Type	Condo / Townhouse
Sub-Type	Lowrise Apartment
Style	Single Level Apartment
Status	Active

### **Community Information**

Address	107 4835 104a Street
Area	Edmonton
Subdivision	Empire Park
City	Edmonton
County	ALBERTA
Province	AB
Postal Code	T6H 0R5

### **Amenities**

Amenities	Ceiling 9 ft., Patio
Parking	Parkade

### **Interior**

Appliances	Dishwasher-Built-In, Dryer, Microwave Hood Fan, Refrigerator, Stove-Electric, Washer
Heating	Forced Air-1, Natural Gas
# of Stories	5
Stories	5
Has Basement	Yes
Basement	None, No Basement

### **Exterior**

Exterior	Wood, Stone, Stucco
Exterior Features	Playground Nearby, Public Transportation, Schools, Shopping Nearby
Roof	Tar & Gravel
Construction	Wood, Stone, Stucco
Foundation	Concrete Perimeter

## Additional Information

Date Listed	March 13th, 2025
Days on Market	1
Zoning	Zone 15
Condo Fee	\$337

DATA IS DEEMED RELIABLE BUT IS NOT GUARANTEED ACCURATE BY THE REALTORS® ASSOCIATION OF EDMONTON. COPYRIGHT 2025 BY THE REALTORS® ASSOCIATION OF EDMONTON. ALL RIGHTS RESERVED. Trademarks are owned or controlled by the Canadian Real Estate Association (CREA) and identify real estate professionals who are members of CREA (REALTOR®, REALTORS®) and/or the quality of services they provide (MLS®, Multiple Listing Service®)

Listing information last updated on March 14th, 2025 at 1:47pm MDT