

\$433,900 - 7825 Koruluk Link Link, Edmonton

MLS® #E4425213

\$433,900

3 Bedroom, 2.50 Bathroom, 1,603 sqft

Single Family on 0.00 Acres

Keswick Area, Edmonton, AB

Visit the Listing Brokerage (and/or listing REALTOR®) website to obtain additional information. This 1,603 sq ft home features a single attached garage with lots of extra driveway parking space for your other vehicle.

The first floor features a den area perfect for multi use as a reception room or children's playroom. The second floor features a modern open space of the living and dining room blended seamlessly with the large kitchen that includes an island and walk-in pantry. The third floor is complete with an ensuite bedroom with two more bedrooms for guests, office space, or your growing family. Enjoy all that Keswick has to offer and experience unparalleled comfort and style in every corner of this exceptional home today!



Built in 2020

Essential Information

MLS® #	E4425213
Price	\$433,900
Bedrooms	3
Bathrooms	2.50
Full Baths	2
Half Baths	1
Square Footage	1,603
Acres	0.00

Year Built 2020
Type Single Family
Sub-Type Residential Attached
Style 3 Storey
Status Active

Community Information

Address 7825 Koruluk Link Link
Area Edmonton
Subdivision Keswick Area
City Edmonton
County ALBERTA
Province AB
Postal Code T6W 4V1

Amenities

Amenities Off Street Parking, Carbon Deck
Parking Spaces 3
Parking Single Garage Attached

Interior

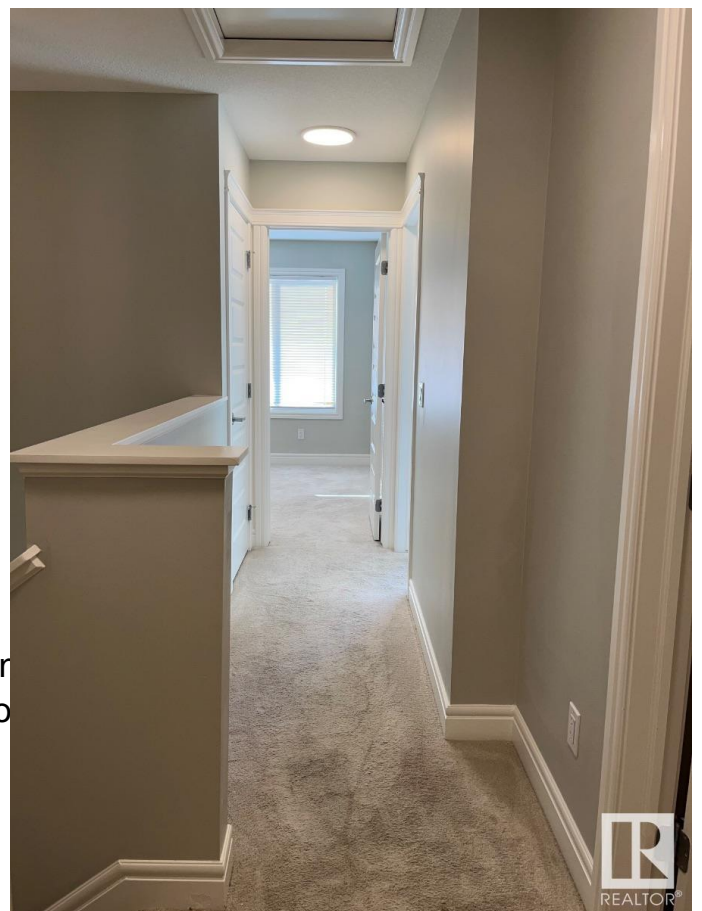
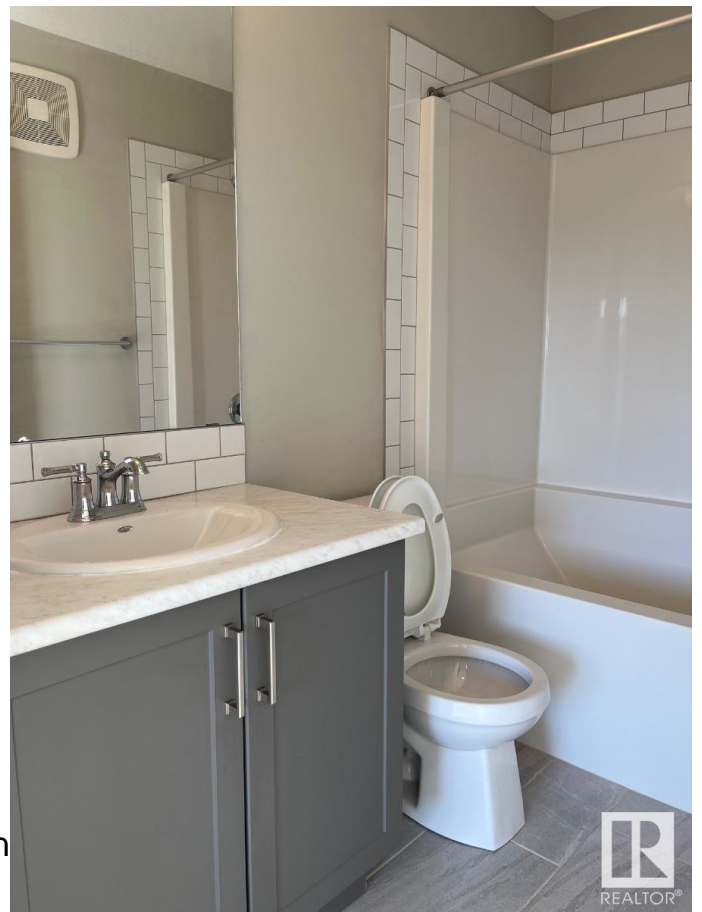
Interior Features ensuite bathroom
Appliances See Remarks
Heating Forced Air-1, Natural Gas
Stories 3
Has Basement Yes
Basement None, No Basement

Exterior

Exterior Wood, Stone, Vinyl
Exterior Features Landscaped, Low Maintenance, Transportation, Schools, Shopping
Roof Asphalt Shingles
Construction Wood, Stone, Vinyl
Foundation Concrete Perimeter

Additional Information

Date Listed March 12th, 2025



Days on Market	2
Zoning	Zone 56

DATA IS DEEMED RELIABLE BUT IS NOT GUARANTEED ACCURATE BY THE REALTORS® ASSOCIATION OF EDMONTON. COPYRIGHT 2025 BY THE REALTORS® ASSOCIATION OF EDMONTON. ALL RIGHTS RESERVED. Trademarks are owned or controlled by the Canadian Real Estate Association (CREA) and identify real estate professionals who are members of CREA (REALTOR®, REALTORS®) and/or the quality of services they provide (MLS®, Multiple Listing Service®)

Listing information last updated on March 14th, 2025 at 12:02pm MDT