

Courtesy Of Fadi Georgi and Megan Benoit Of MaxWell Polaris

\$584,888 - 8205 Kiriak Loop, Edmonton

MLS® #E4424324

\$584,888

3 Bedroom, 2.50 Bathroom, 1,795 sqft
Single Family on 0.00 Acres

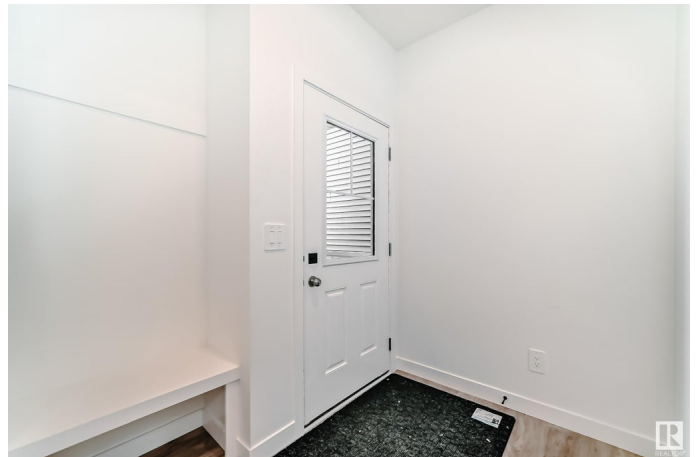
Keswick Area, Edmonton, AB

A welcoming home designed with function in mind, close to parks and ponds in Keswick community. Attached double car garage, future mortgage helper with the ready side door entry & legal suite rough-ins for a legal suite. Welcoming you into the spacious foyer with a built-in bench, the main floor presents a cozy living area with finishes that feel warm and inviting. Kitchen features warm cabinets, 3cm quartz countertops, water line to fridge and a large walk in pantry! Continue upstairs to a bonus room, laundry room, 4pc bath, two spacious bedrooms plus a gorgeous master retreat with vaulted ceilings, two walk in closets and, a 5-piece ensuite featuring walk in shower, soaker tub and double sinks. This home is under construction with a tentative completion August. Photos of previous build, interior colors are represented. \$3,000 Appliance Allowance included. HOA TBD

Built in 2025

Essential Information

| | |
|------------|-----------|
| MLS® # | E4424324 |
| Price | \$584,888 |
| Bedrooms | 3 |
| Bathrooms | 2.50 |
| Full Baths | 2 |
| Half Baths | 1 |



| | |
|----------------|------------------------|
| Square Footage | 1,795 |
| Acres | 0.00 |
| Year Built | 2025 |
| Type | Single Family |
| Sub-Type | Detached Single Family |
| Style | 2 Storey |
| Status | Active |

Community Information

| | |
|-------------|------------------|
| Address | 8205 Kiriak Loop |
| Area | Edmonton |
| Subdivision | Keswick Area |
| City | Edmonton |
| County | ALBERTA |
| Province | AB |
| Postal Code | T6W 5S2 |

Amenities

| | |
|-----------|----------------------------|
| Amenities | Ceiling 9 ft., See Remarks |
| Parking | Double Garage Attached |

Interior

| | |
|-------------------|--|
| Interior Features | ensuite bathroom |
| Appliances | Garage Control, Garage Opener, Hood Fan, See Remarks |
| Heating | Forced Air-1, Natural Gas |
| Stories | 2 |
| Has Basement | Yes |
| Basement | Full, Unfinished |

Exterior

| | |
|-------------------|---|
| Exterior | Wood, Vinyl |
| Exterior Features | Airport Nearby, Corner Lot, Park/Reserve, Public Transportation, Schools, Shopping Nearby, Stream/Pond, See Remarks |
| Roof | Asphalt Shingles |
| Construction | Wood, Vinyl |
| Foundation | Concrete Perimeter |

Additional Information

| | |
|-------------|-----------------|
| Date Listed | March 6th, 2025 |
|-------------|-----------------|

| | |
|----------------|----------|
| Days on Market | 8 |
| Zoning | Zone 56 |
| HOA Fees | 1 |
| HOA Fees Freq. | Annually |

DATA IS DEEMED RELIABLE BUT IS NOT GUARANTEED ACCURATE BY THE REALTORS® ASSOCIATION OF EDMONTON. COPYRIGHT 2025 BY THE REALTORS® ASSOCIATION OF EDMONTON. ALL RIGHTS RESERVED. Trademarks are owned or controlled by the Canadian Real Estate Association (CREA) and identify real estate professionals who are members of CREA (REALTOR®, REALTORS®) and/or the quality of services they provide (MLS®, Multiple Listing Service®)

Listing information last updated on March 14th, 2025 at 1:22pm MDT