

Courtesy Of Erin Holowach Of ComFree

# \$1,295,000 - 10610 138 Street, Edmonton

MLS® #E4423255

**\$1,295,000**

4 Bedroom, 4.00 Bathroom, 2,829 sqft  
Single Family on 0.00 Acres

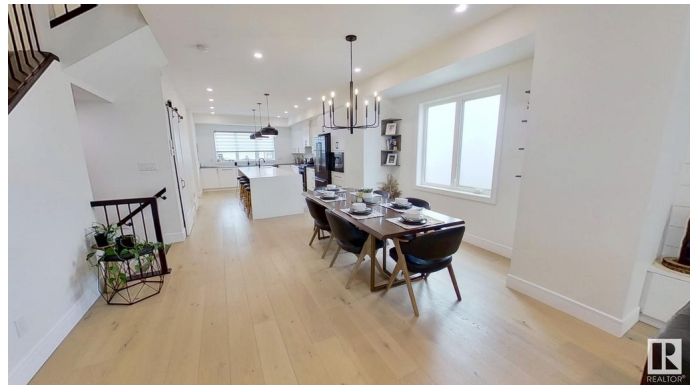
Glenora, Edmonton, AB

Stunning Home in Prestigious Glenora  
Welcome to this breathtaking 3-story infill home, offering 3,559 sq. ft. of meticulously designed living space in the heart of Glenora—“one of the most sought-after neighborhoods in the city. Built in 2020 by renowned NorthPointe Homes, this custom masterpiece blends modern elegance with superior craftsmanship. Key Features: 3-Story Design — Spacious and functional layout Double Heated Garage — Perfect for winter months Premium Finishes — High-end materials & luxury touches throughout Custom cabinetry, quartz countertops, and black stainless appliances Prime Location — Quick and easy access to downtown Located in quieter street, minutes from downtown, top schools, and river valley trails. A rare opportunity to own a charming home in a historic, upscale community!

Built in 2020

## Essential Information

MLS® #	E4423255
Price	\$1,295,000
Bedrooms	4
Bathrooms	4.00
Full Baths	3
Half Baths	2



Square Footage	2,829
Acres	0.00
Year Built	2020
Type	Single Family
Sub-Type	Detached Single Family
Style	3 Storey
Status	Active

### **Community Information**

Address	10610 138 Street
Area	Edmonton
Subdivision	Glenora
City	Edmonton
County	ALBERTA
Province	AB
Postal Code	T5N 2J8

### **Amenities**

Amenities	Air Conditioner, Carbon Monoxide Detectors, Ceiling 9 ft., Closet Organizers, Deck, Detectors Smoke, Hot Water Electric, No Animal Home, No Smoking Home, Patio, Vinyl Windows
Parking	Double Garage Detached

### **Interior**

Interior Features	ensuite bathroom
Appliances	Air Conditioning-Central, Alarm/Security System, Dishwasher-Built-In, Dryer, Garage Control, Garage Opener, Garburator, Hood Fan, Oven-Microwave, Refrigerator, Stove-Gas, Vacuum Systems, Washer
Heating	Forced Air-1, Natural Gas
Fireplace	Yes
Fireplaces	Wall Mount
Stories	4
Has Basement	Yes
Basement	Full, Finished

### **Exterior**

Exterior	Wood, Asphalt, Brick, Vinyl
Exterior Features	Back Lane, Fenced, Flat Site, Golf Nearby, Landscaped, Level Land, Paved Lane, Playground Nearby, Public Transportation, Schools, Shopping Nearby

Lot Description	8.53 X 42.79
Roof	Asphalt Shingles
Construction	Wood, Asphalt, Brick, Vinyl
Foundation	Concrete Perimeter

### **Additional Information**

Date Listed	February 28th, 2025
Days on Market	14
Zoning	Zone 11

DATA IS DEEMED RELIABLE BUT IS NOT GUARANTEED ACCURATE BY THE REALTORS® ASSOCIATION OF EDMONTON. COPYRIGHT 2025 BY THE REALTORS® ASSOCIATION OF EDMONTON. ALL RIGHTS RESERVED. Trademarks are owned or controlled by the Canadian Real Estate Association (CREA) and identify real estate professionals who are members of CREA (REALTOR®, REALTORS®) and/or the quality of services they provide (MLS®, Multiple Listing Service®)

Listing information last updated on March 14th, 2025 at 1:22pm MDT