

Courtesy Of Ken Kunkel Of Park Realty

\$420,000 - 13426 166 Avenue, Edmonton

MLS® #E4423185

\$420,000

4 Bedroom, 2.50 Bathroom, 1,455 sqft
Single Family on 0.00 Acres

Carlton, Edmonton, AB

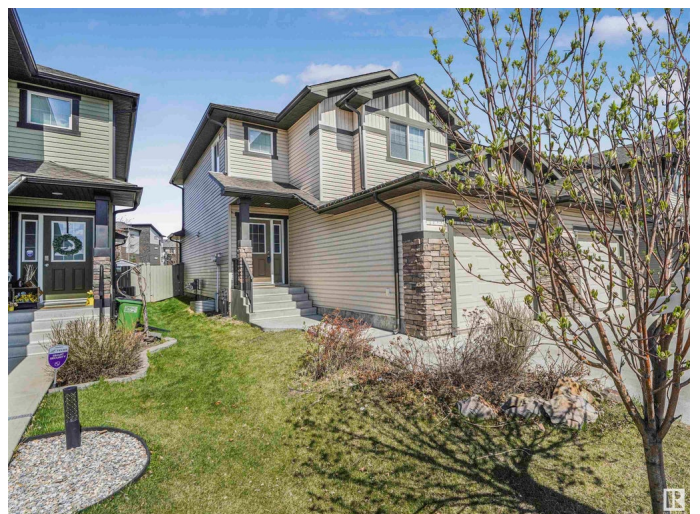
Stunning home in Carlton! Perfectly situated on a quiet, family-friendly street. Offering 4 bedrooms, 2.5 baths, and 1,455 sq. ft. of thoughtfully designed space, blending style, comfort, and functionality. The inviting exterior features charming stone accents and an attached garage w/ epoxy flooring. Inside, the bright and airy living space is bathed in natural light, complemented by sleek laminate flooring. The well-appointed kitchen offers ample storage and seamless access to the backyard, where a spacious deck and BBQ gas line create the perfect setting for outdoor gatherings. Upstairs, the primary suite features a walk-in closet and a 3 pc ensuite with a generous shower. Two additional bedrooms, a 4 pc bath, and convenient second-floor laundry complete this level. The finished basement expands the living space with a nice family room, an additional bedroom, and rough-ins for a potential 4th bathroom. Located just minutes from schools, shopping, and major roadways! Plus new Central A/C (2024)!

Built in 2012

Essential Information

MLS® # E4423185

Price \$420,000



Bedrooms	4
Bathrooms	2.50
Full Baths	2
Half Baths	1
Square Footage	1,455
Acres	0.00
Year Built	2012
Type	Single Family
Sub-Type	Half Duplex
Style	2 Storey
Status	Active

Community Information

Address	13426 166 Avenue
Area	Edmonton
Subdivision	Carlton
City	Edmonton
County	ALBERTA
Province	AB
Postal Code	T6V 0G6

Amenities

Amenities	Air Conditioner, Deck, No Smoking Home, See Remarks
Parking Spaces	2
Parking	Single Garage Attached

Interior

Interior Features	ensuite bathroom
Appliances	Dishwasher-Built-In, Dryer, Garage Opener, Microwave Hood Fan, Refrigerator, Stove-Electric, Washer, Window Coverings
Heating	Forced Air-1, Natural Gas
Stories	3
Has Basement	Yes
Basement	Full, Finished

Exterior

Exterior	Wood, Stone, Vinyl
Exterior Features	Backs Onto Park/Trees, Fenced, Golf Nearby, Landscaped, Playground Nearby, Public Swimming Pool, Public Transportation, Schools,

Shopping Nearby, See Remarks

Roof Asphalt Shingles
Construction Wood, Stone, Vinyl
Foundation Concrete Perimeter

Additional Information

Date Listed February 27th, 2025
Days on Market 15
Zoning Zone 27

DATA IS DEEMED RELIABLE BUT IS NOT GUARANTEED ACCURATE BY THE REALTORS® ASSOCIATION OF EDMONTON. COPYRIGHT 2025 BY THE REALTORS® ASSOCIATION OF EDMONTON. ALL RIGHTS RESERVED. Trademarks are owned or controlled by the Canadian Real Estate Association (CREA) and identify real estate professionals who are members of CREA (REALTOR®, REALTORS®) and/or the quality of services they provide (MLS®, Multiple Listing Service®)

Listing information last updated on March 14th, 2025 at 1:17am MDT