

Courtesy Of Karen G Stanko Of RE/MAX Real Estate

\$389,900 - 57 1051 Graydon Hill Boulevard, Edmonton

MLS® #E4416677

\$389,900

2 Bedroom, 2.50 Bathroom, 1,668 sqft
Condo / Townhouse on 0.00 Acres

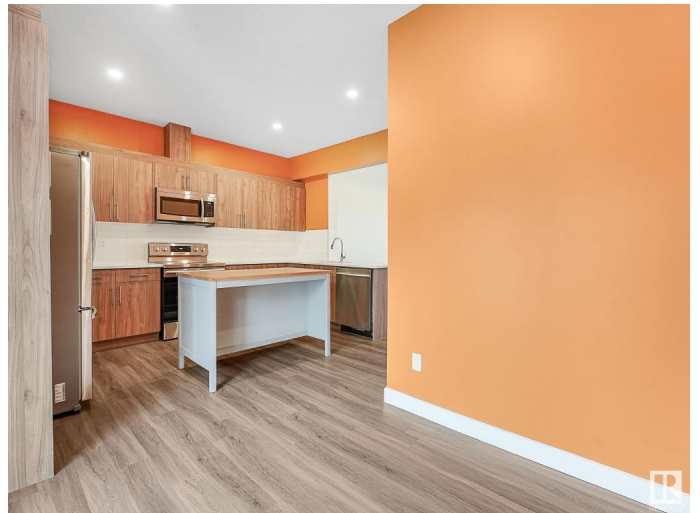
Graydon Hill, Edmonton, AB

Welcome to your gorgeous like new Townhome in the lovely community of Graydon Hill. The layout will delight you with the intelligent use of over 1700 Square feet of livable space featuring 2 huge bedrooms, 2.5 baths & three floors of incredibly planned space. The Large flex room on the Main floor can be converted into a bedroom or used as office/work out space. The Second floor highlights an open concept feel with an oversized great room floating right into the modern kitchen with luxurious quartz counter tops, 9 ft ceilings, 8mm vinyl plank flooring, sleek modern soft close cabinetry, illuminating pot lights, a half bath, & 2 generous patios! Onto the third floor, you will find your 2 impressive bedrooms both w/ private bathrooms & walk-in closets. Third-floor laundry carefully placed for your time and convenience. The unit has new carpet and fresh paint is move in ready for quick possession! Steps from Parks, trails & schools location cannot be beat!

Built in 2019

Essential Information

MLS® #	E4416677
Price	\$389,900
Bedrooms	2



Bathrooms	2.50
Full Baths	2
Half Baths	1
Square Footage	1,668
Acres	0.00
Year Built	2019
Type	Condo / Townhouse
Sub-Type	Townhouse
Style	3 Storey
Status	Active

Community Information

Address	57 1051 Graydon Hill Boulevard
Area	Edmonton
Subdivision	Graydon Hill
City	Edmonton
County	ALBERTA
Province	AB
Postal Code	T6W 1A3

Amenities

Amenities	Ceiling 9 ft., Hot Water Natural Gas, Smart/Program. Thermostat, HRV System
Parking	Double Garage Attached

Interior

Interior Features	ensuite bathroom
Appliances	Dishwasher-Built-In, Dryer, Garage Control, Garage Opener, Microwave Hood Fan, Refrigerator, Stove-Electric, Washer, Window Coverings
Heating	Forced Air-1, Natural Gas
Stories	3
Has Basement	Yes
Basement	None, No Basement

Exterior

Exterior	Wood, Stone, Vinyl
Exterior Features	Landscaped, Playground Nearby, Public Transportation, Shopping Nearby
Roof	Asphalt Shingles

Construction	Wood, Stone, Vinyl
Foundation	Concrete Perimeter

School Information

Elementary	Steinhauer School
Middle	D S McKenzie School
High	Harry Ainlay School

Additional Information

Date Listed	December 28th, 2024
Days on Market	75
Zoning	Zone 55
Condo Fee	\$199

DATA IS DEEMED RELIABLE BUT IS NOT GUARANTEED ACCURATE BY THE REALTORS® ASSOCIATION OF EDMONTON. COPYRIGHT 2025 BY THE REALTORS® ASSOCIATION OF EDMONTON. ALL RIGHTS RESERVED. Trademarks are owned or controlled by the Canadian Real Estate Association (CREA) and identify real estate professionals who are members of CREA (REALTOR®, REALTORS®) and/or the quality of services they provide (MLS®, Multiple Listing Service®)

Listing information last updated on March 13th, 2025 at 8:17am MDT