

# \$155,000 - 4845 115 Avenue Nw Nw, Edmonton

MLS® #E4352586

**\$155,000**

0 Bedroom, 0.00 Bathroom,  
Single Family on 0.07 Acres

Beverly Heights, Edmonton, AB

Vacant 25' x 120' Lot, READY TO BUILD!!  
South facing backyard. Across from Ada Blvd  
and steps to Gorgeous River Valley. Build on  
an affordable lot and enjoy the incredible  
amenities around! Developer can build or bring  
your own contractor.

## Essential Information

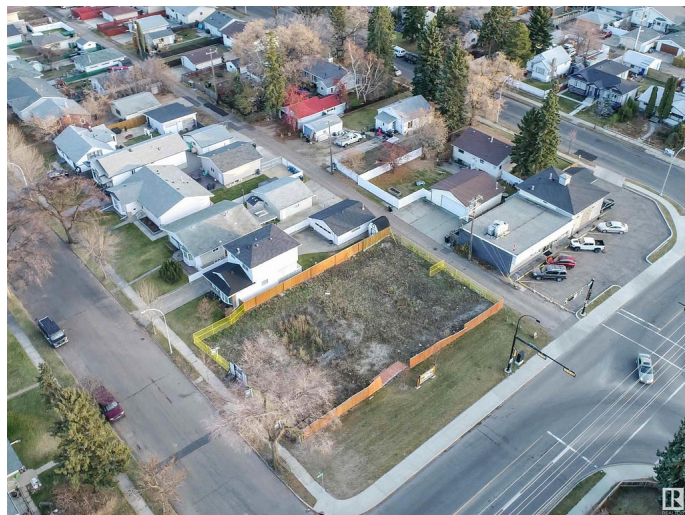
MLS® #	E4352586
Price	\$155,000
Bathrooms	0.00
Acres	0.07
Type	Single Family
Sub-Type	Vacant Lot/Land

## Community Information

Address	4845 115 Avenue Nw Nw
Area	Edmonton
Subdivision	Beverly Heights
City	Edmonton
County	ALBERTA
Province	AB
Postal Code	T5W 0W3

## Exterior

Exterior Features	Back Lane, Golf Nearby, Playground Nearby, Private Setting, Public Transportation, Schools, Shopping Nearby
-------------------	---



**Additional Information**

Date Listed                    August 2nd, 2023

DATA IS DEEMED RELIABLE BUT IS NOT GUARANTEED ACCURATE BY THE REALTORS® ASSOCIATION OF EDMONTON. COPYRIGHT 2024 BY THE REALTORS® ASSOCIATION OF EDMONTON. ALL RIGHTS RESERVED.Trademarks are owned or controlled by the Canadian Real Estate Association (CREA) and identify real estate professionals who are members of CREA (REALTOR®, REALTORS®) and/or the quality of services they provide (MLS®, Multiple Listing Service®)

Listing information last updated on May 18th, 2024 at 12:46am MDT