

\$150,000 - 4841 115 Avenue Nw, Edmonton

MLS® #E4352560

\$150,000

0 Bedroom, 0.00 Bathroom,
Single Family on 0.07 Acres

Beverly Heights, Edmonton, AB

Building Lot 25' x 120' Fully serviced vacant lot. READY TO BUILD! South rear yard. Across the street from Ada Blvd and the gorgeous River Valley! Developer can build or bring your own contractor.

Essential Information

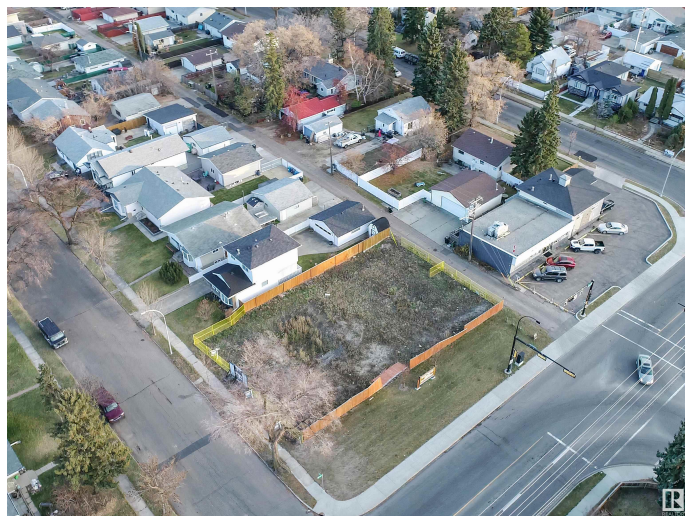
| | |
|-----------|-----------------|
| MLS® # | E4352560 |
| Price | \$150,000 |
| Bathrooms | 0.00 |
| Acres | 0.07 |
| Type | Single Family |
| Sub-Type | Vacant Lot/Land |

Community Information

| | |
|-------------|--------------------|
| Address | 4841 115 Avenue Nw |
| Area | Edmonton |
| Subdivision | Beverly Heights |
| City | Edmonton |
| County | ALBERTA |
| Province | AB |
| Postal Code | T5W 0W3 |

Exterior

| | |
|-------------------|--|
| Exterior Features | Back Lane, Golf Nearby, Transportation |
| Lot Description | 25' x 139' |



Additional Information

Date Listed August 2nd, 2023

DATA IS DEEMED RELIABLE BUT IS NOT GUARANTEED ACCURATE BY THE REALTORS® ASSOCIATION OF EDMONTON. COPYRIGHT 2024 BY THE REALTORS® ASSOCIATION OF EDMONTON. ALL RIGHTS RESERVED.Trademarks are owned or controlled by the Canadian Real Estate Association (CREA) and identify real estate professionals who are members of CREA (REALTOR®, REALTORS®) and/or the quality of services they provide (MLS®, Multiple Listing Service®)

Listing information last updated on May 18th, 2024 at 6:31pm MDT